

# Table of Contents

CONTENTS		PAGE NO.
Introduction		1
Locality maps		2-7
Vegetation types:	1. Sandstone Crests	8
	2. Coastal Plains	18
	3. Beach and Dunes	22
	4. Shale Slopes	23
	5. Rolling Hills and Lower Shale Slopes	30
	6. Lowlands	34
	7. Tidal Flats	36
Photo gallery		37-55
Acknowledgements		55

# Introduction

The Pittwater area has a unique scenic character and provides a wide variety of habitats for many native plants and animals. From the beautiful bushland of coastal heaths, eucalypt woodlands and distinctive Spotted Gum forests, subtropical rainforests of Cabbage Tree Palms to the Swamp Mahogany Forest in the valleys and wetlands.

This booklet has been prepared so that residents can learn more about the natural landscape of Pittwater and can plan their gardens to correspond with the vegetation that grows here. Not only do these plants grow with little maintenance once established, but they provide habitat for our native animals, including koalas, possums and gliders, bats, parrots, nomadic honeyeaters and smaller insectivorous birds such as blue wrens, firetails and pardalotes.

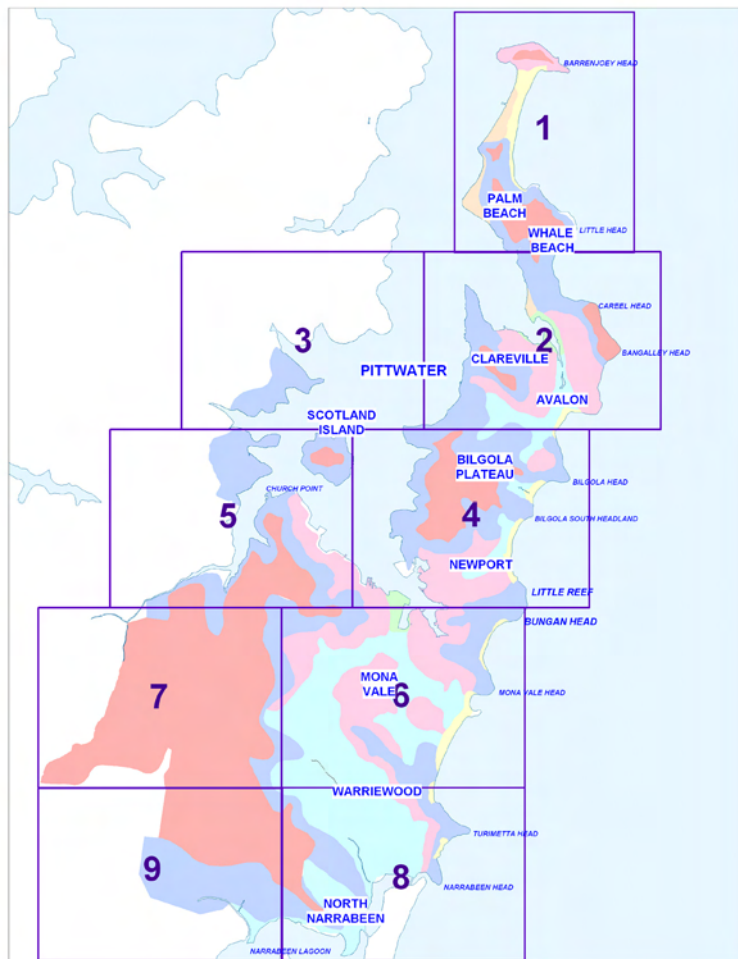
By providing native habitats in our gardens we are helping to conserve the biodiversity of Pittwater and assisting the natural ecosystem to remain functional. In a healthy ecosystem, birds and beneficial insects are able to control pest insect populations, thus reducing their impacts on plants and eliminating the need for insecticides.

Mature trees can be impacted by development application construction works resulting in loss of native canopy. Replacement of local native species helps to enhance the aesthetics of an area and continue to provide essential food sources for our wildlife.

Local native nurseries specialise in growing the local plants of the Pittwater area. Local native plants are adapted to local conditions and soil types resulting in plants that thrive, are hardy and well adapted to local conditions. Creating a local native garden protects the genetic characteristics of Pittwater to provide habitat for Pittwater's native fauna.

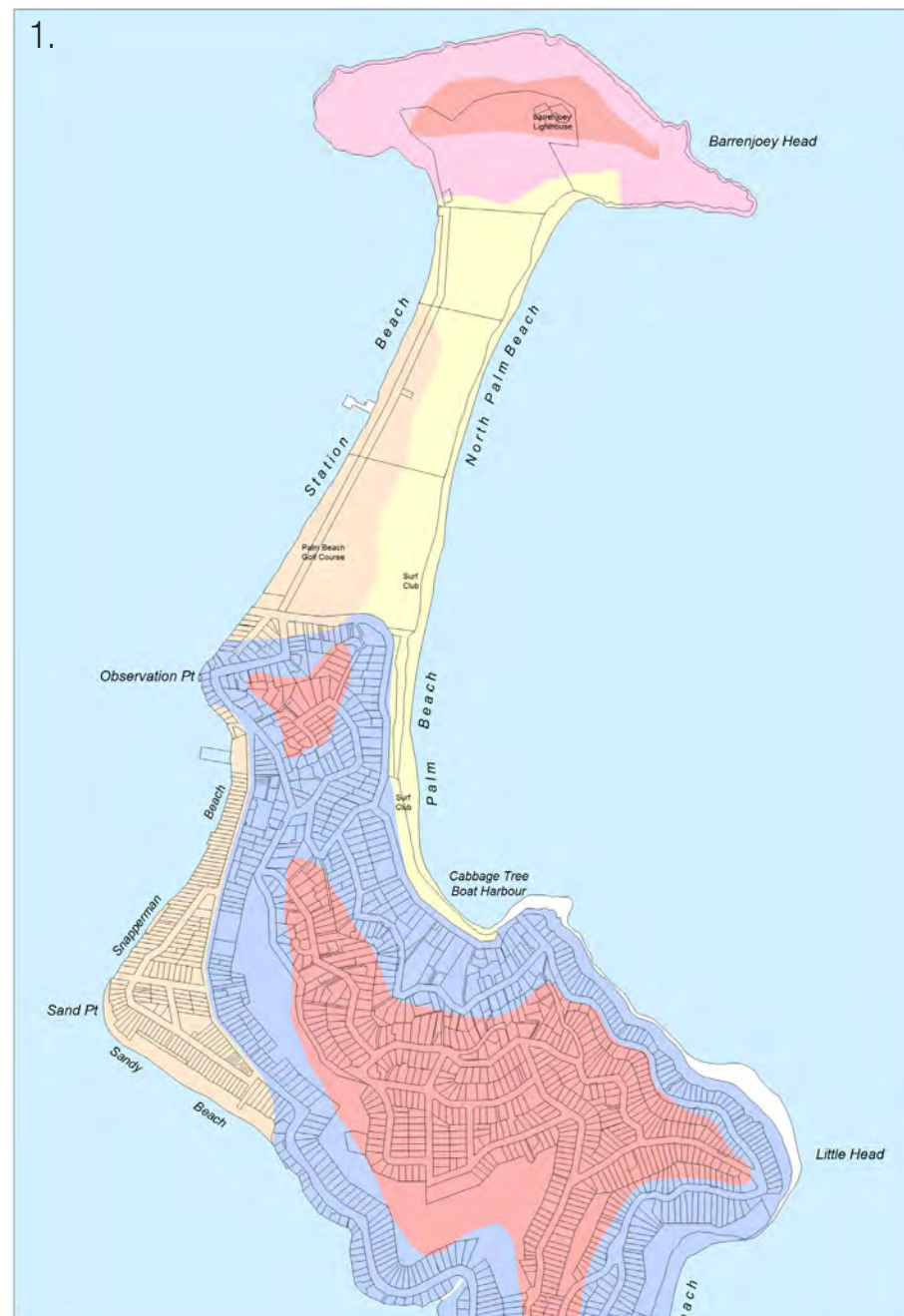


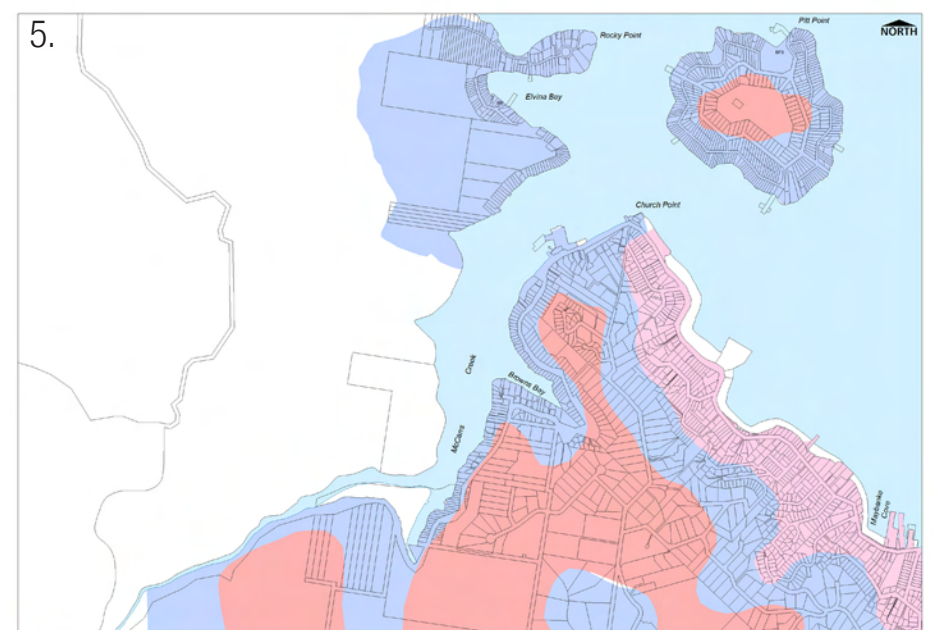
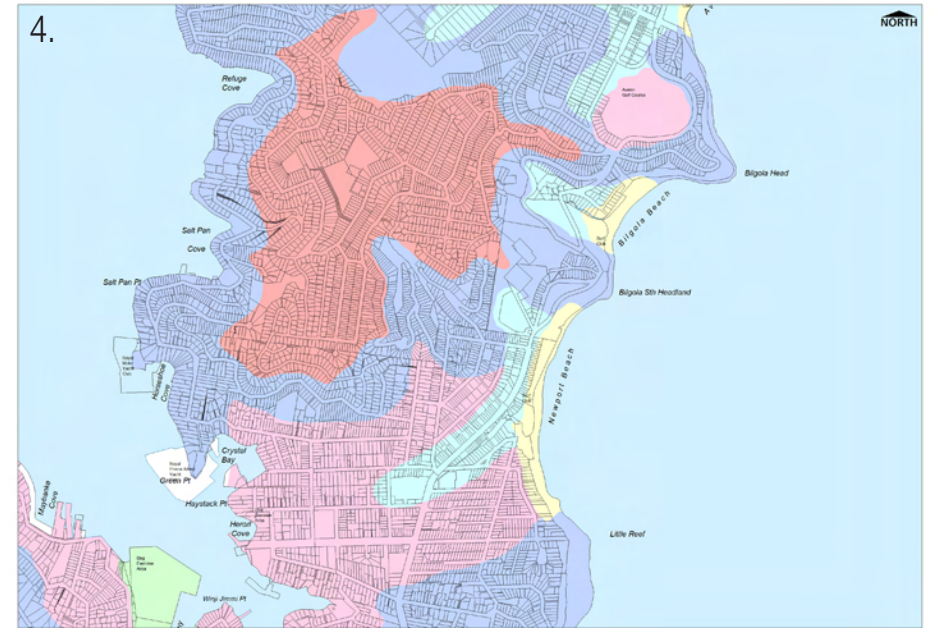
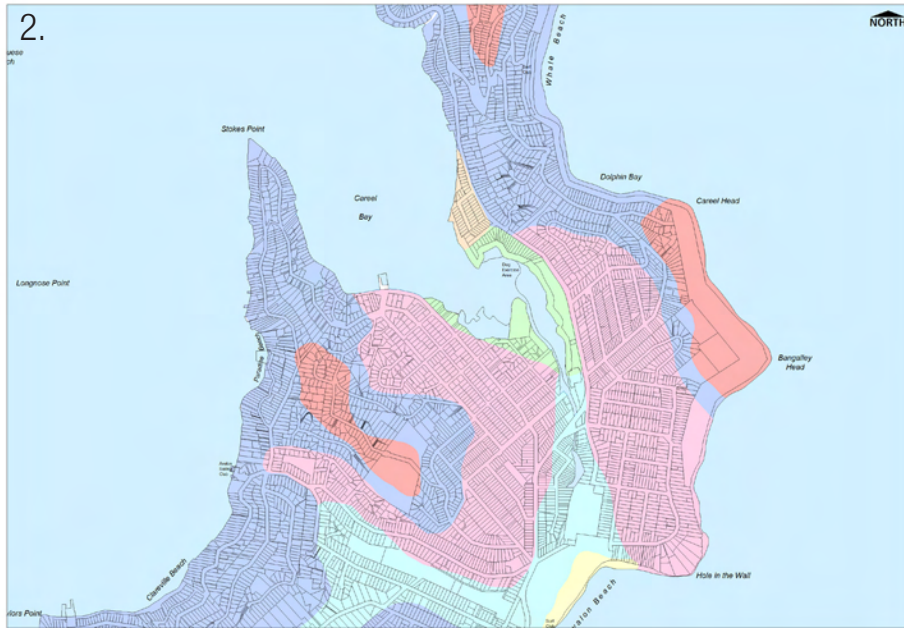
# Locality Maps



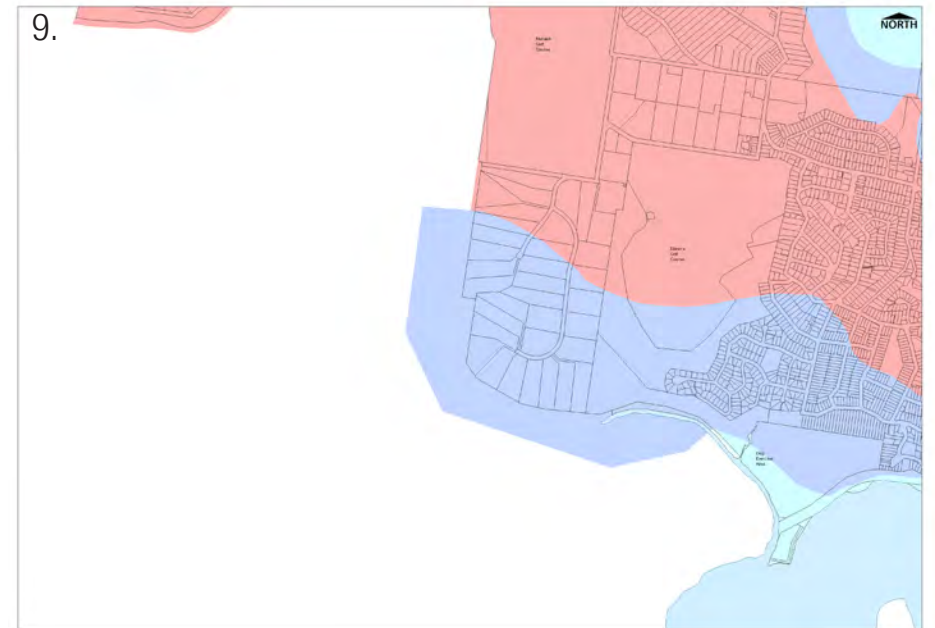
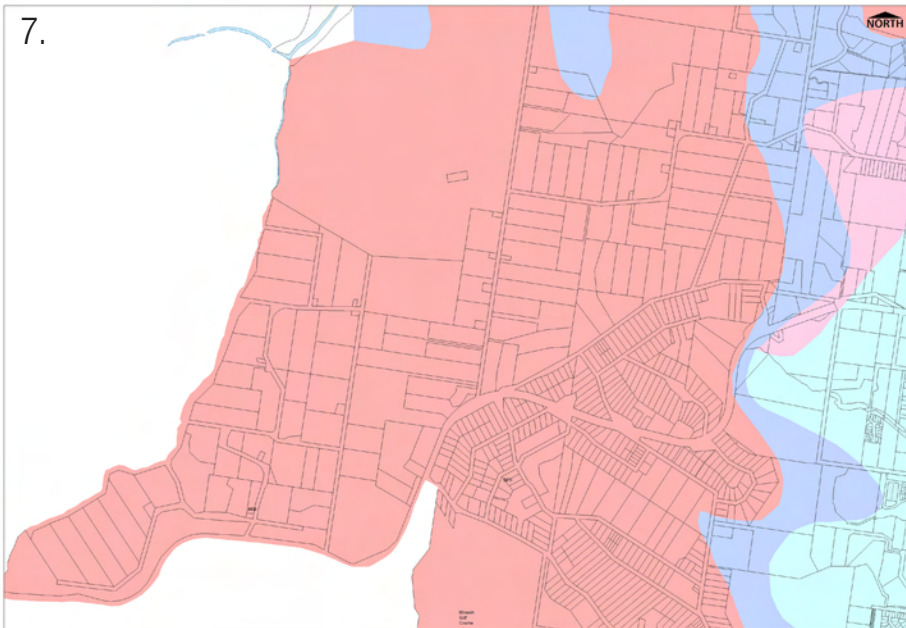
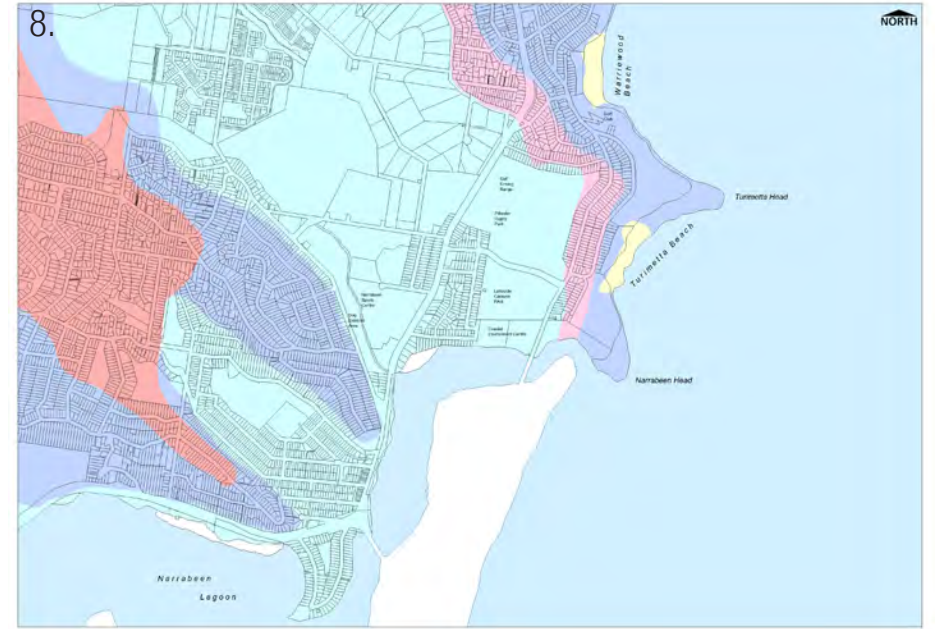
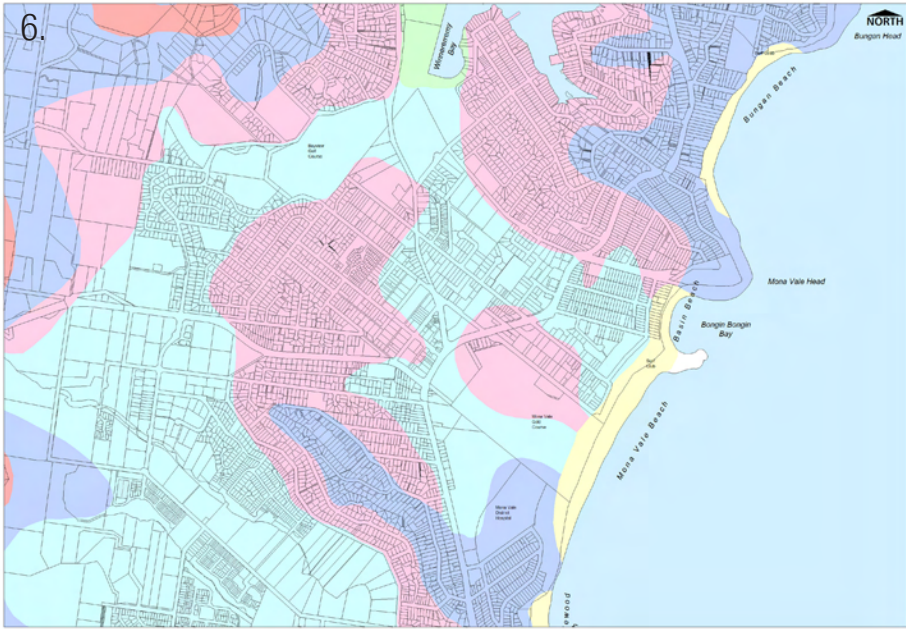
## Vegetation Types

- Rolling Hills & Lower Shale Slopes
- Lowlands
- Shale Slopes
- Coastal Plains
- Tidal Flats
- Beach & Dunes
- Sandstone Crests











## 1. SANDSTONE CREST

These areas are the plateaus and upper slopes with generally shallow soils developed on Hawkesbury sandstone. Their soils fall into the Hawkesbury, Gynea, Somersby and Oxford Falls soil landscapes.

<b>A. OPEN FOREST</b>		
COMMON NAME	SCIENTIFIC NAME	CHARACTERISTICS
<b>Trees:</b>		
Parramatta Green Wattle	Acacia parramattensis	Pale yellow flowers and fine fern-like leaves.
Coastal She-Oak	Allocasuarina distyla	Distinctive heathy small tree. Male plants turn red when in flower. Females have large cones.
Black She Oak	Allocasuarina littoralis	Deep fissured bark. Cones cylindrical shape with a flat apex
Smooth-barked Apple or Sydney Red Gum	Angophora costata	Orange to salmon coloured bark. Branches that contort and twist.
Dwarf Apple	Angophora hispida	Small tree. Stuff grey-green leaves and striking red soft bristles. Masses of large cream flowers.
Saw toothed/ Old Man Banksia	Banksia serrata	Knobbly grey bark and thick serrated leaves. Nectar for birds and marsupials.
Bangalay	Eucalyptus botryoides	Rough reddish barked tree with short trunk and spreading crown.
Red Bloodwood	Eucalyptus gummifera	Tesselated dark grey-brown bark. Flowers with heavily scented blossoms.
Scribbly Gum	Eucalyptus haemastoma	Smooth-bark is pale with scribbles. Important Koala food tree.
Sandstone Stringybark	Eucalyptus oblonga	A small tree, with stringy bark extending to the smallest branches.
Sydney Peppermint	Eucalyptus piperita	Grey rough barked trunk, with white upper limbs and scented peppermint leaves. Wet gully areas.
Grey Gum	Eucalyptus punctata	Bark is grey with large cream patches. Significant Koala food tree.
Silver top Ash	Eucalyptus sieberi	The trunk has dark flaky bark, with smooth creamy upper branches.
Bastard/ Broad-leaved White Mahogany	Eucalyptus umbra	Thick tough leaves and fibrous bark.
<b>Shrubs:</b>		
Broad-Leaved Geebung	Persoonia levis	Black flaky-papery bark brilliant red underneath. Rich green leaves.



Sally Wattle	Acacia floribunda	Fine delicate leaves and abundant sprays of pale yellow wattle blossoms.
Flax-Leaved Wattle	Acacia linifolia	Graceful, light shrub. Soft green drooping foliage, cream blossoms.
Sydney Golden Wattle	Acacia longifolia	Attractive bushy shrub. Quick growing screen plant. Golden blossoms.
Sweet-scented Wattle	Acacia suaveolens	Pale yellow, perfumed flower balls.
Sunshine Wattle	Acacia terminalis	Attractive open shrub. Bright yellow flowers.
Yellow Flowered Aotus	Aotus ericoides	Small attractive heath-type shrub. Massed yellow pea flowers cover shrub in Spring.
NSW Christmas Bush	Ceratopetalum gummiferum	Flowers are small and white. Fruits that swell to an attractive bright red in summer.
Crowea	Crowea saligna	Small shrub with pink to rose star-shaped flowers. Stunning displays in late Winter.
Eggs and Bacon	Dillwynia retorta	Small attractive fine-leaved shrub that bears a profusion of red and yellow pea flowers in Spring.
Paper bark Tea-tree	Leptospermum trinervium (formerly L. attenuatum)	Flowers white. Stout trunk with papery-flaky bark
Lemon-scented tea-tree	Leptospermum polygalifolium	Graceful shrub with soft lemon scented leaves & abundant white flowers.
Hairpin Banksia	Banksia spinulosa	Banksia flower being a major food source for birds and possums.
Banksia	Banksia oblongifolia	Leaves are thick and variably toothed with rusty felt on main underside vein.
Blackthorn	Bursaria spinosa	Flowers in late Summer - white.
Prickly Moses	Acacia ulicifolia	Flowers in late Winter with pale lemon wattle flowers.
Wedding Bush	Ricinocarpus pinifolius	Soft erect shrub, with white flowers.
Hair-pin Banksia	Banksia spinulosa var. spinulosa	Flowers in Autumn/ Winter. A major food source for birds and possums.
Common Hop Bush	Dodonaea triquetra	Soft leafy shrub with thin -textured leaves
Native Fuschia	Epacris longiflora	Brilliant Winter flowers with small heart-shaped leaves. Moist sunny.
Broad-leaved Wedge Pea	Gompholobium latifolium	Large lemon yellow pea flower with broad, flat leaves.
Grey Spider flower	Grevillea buxifolia	Rusty-brown to grey flowers with whitish hairs.
White spider flower	Grevillea linearifolia	White flowers in Spring.
Pink spider flower	Grevillea sericea	Pink-purple flower in Spring ; tolerates dry, open areas.
Red spider flower	Grevillea speciosa	Crimson/red Winter flowers.



Hakea	Hakea gibbosa	Prickly shrub with dense foliage and creamy flowers.
Fern-leafed banksia	Banksia oblongifolia	Flower is a pale yellow spike. Leaves are toothed and leathery.
Bushy needlebrush	Hakea sericea	Flowers are tiny, pale yellow clusters. A dense, woody and prickly shrub.
Mountain Devil/ Honey Flower	Lambertia formosa	Large orange/red tubular flowers.
Rice flower	Pimelia linifolia	White clustered flowers in Spring
Native Parsnip	Platysace lanceolata	White compact flowers in Summer.
Flat-pea	Platylobium formosum ssp. formosum	Scrambling pea-shrub with leaves heart-shaped.
Fine-leaf Bush-pea	Pultenaea stipularis	Summer flowers are yellow with faint -red markings.
Waratah	Telopea speciosissima	Develops spectacular crimson flower. Has become rare in Pittwater due to illegal picking of flowers.
Variable Bossiaea	Bossiaea heterophylla	Narrow leaves, with red, orange and yellow patterned flowers.
<b>Herbs, Climbers, Grasses and Groundcovers:</b>		
Grass Tree	Xanthorrhoea arborea	Long grass-like leaves with tall flower spike. The rich nectar is food for birds and insects.
Flannel Flower	Actinotus helianthi	Attractive soft, white daisy -like flower heads.
Tufted Echidna Grass	Echinopogon caespitosus	Slender erect clumping grass. Short dense bristly seed head.
Wombat Berry	Eustrephus latifolius	Flowers in pale pink clusters. Scrambling vine.
Wallaby Grass	Danthonia species	Erect clumping grass. Fluffy open seed spikelets in Summer. Good feature plant.
Blue Flax Lily	Dianella caerulea	Tufted herb, with rich blue flowers and yellow anthers. Edible blue berries.
Apple Berry	Billardiera scandens	Slender climber, with cream drooping flowers and edible fruits.
Love Creeper	Glycine clandestina	Slender creeper with abundant mauve flowers.
Dusky Coral Pea	Kennedia rubicunda	Robust twiner, large red pea flowers with black markings.
False Sarsaparilla	Hardenbergia violacea	Attractive twiner with rich purple pea flowers.



Spiny-headed Mat-rush	Lomandra longifolia	Perfumed-yellow flower clusters on small stalks.
Thyme Scented Melaleuca	Melaleuca thymifolia	Small compact attractive shrub often forming massed display of small white dense clusters of flowers.
Silky Purple Flag	Patersonia sericea	Tufted herb with large purple iris flowers and grass-like leaves.
Conesticks	Petrophile pulchella	Small compact shrub. Tiny yellow flowers. Woody cone develops at growing tip.
Snake flower/ Purple Fanflower	Scaevola ramosissima	Scrambling herb with purple fan-shaped flowers.
Kangaroo grass	Themeda australis	Native grass with purple sheen, which flowers late Spring.
Woolly Xanthosia	Xanthosia pilosa	Small herbaceous groundcover. Woolly leaves and tiny cluster of greenish-white flowers.
Plume Grass	Dichelachne	Erect grass with softly weeping plume-like spikelet in Summer.
Variable Leaved Goodenia	Goodenia heterophylla	Low growing spreading herb with bright yellow flowers.
Many Flowered Lomandra	Lomandra multiflora	Grey-green grass-like herb with pale yellow flowers in dense clusters in Spring.
Native Mint Bush	Prostanthera denticulata	Dense low-growing spreading shrub covered with delicate mauve flowers in Spring.
<b>B. HEATHS - WOODLAND ROCKY HEATHS (SANDSTONE CRESTS)</b>		
<b>Trees:</b>		
Coastal She-Oak	Allocasuarina distyla	Elegant. Males turn a brilliant rusty red when in flower. Females have large cylindrical cones.
Saw toothed/ Old Man Banksia	Banksia serrata	Knobbly grey bark and thick serrated leaves. Nectar for birds and marsupials.
Stringy Bark	Eucalyptus capitellata	Attractive tree great for small gardens. Bark is fibrous. Fruits in Summer.
Red Bloodwood	Eucalyptus gummifera	Tesselated dark grey-brown bark. Flowers with heavily scented blossoms.
Scribbly Gum	Eucalyptus haemastoma	Small shapley gum with mottled bark covered with distinct 'scribbles'. Great feature tree.
Yellow-top Ash	Eucalyptus leuhmanni	Large stiff leaves and drooping form. Flowers in Spring.





Grey Gum	Eucalyptus punctata	Bark is grey with large cream patches. Significant Koala food tree.
<b>Shrubs:</b>		
Sweet-scented wattle	Acacia suaveolens	Pale yellow perfumed balls of flowers with blue-green leaves.
Scrub She-Oak	Allocasuarina distyla	Glossy foliage with grey fruiting nuts.
Dwarf Apple	Angophora hispida	Twisted trunk with bearing red hairs. Large yellow creamy flowers.
Heath-leaved Banksia/ Lantern Banksia	Banksia ericifolia	Flowers in a cylindrical spike. Nectar source for birds. Good screen shrub.
Darwinia	Darwinia fascicularis var. fascicularis	Clusters of tiny pine-like leaves. Flowers changing from white to red.
Broad Leaved Hakea	Hakea dactyloides	Red tipped new leaves, abundant tiny white flowers and woody fruit a feature.
Dogwood	Jacksonia scoparia	Orange-yellow pea flowers, with little leaf coverage on plant.
Sticky sword sedge	Leptospermum squarrosum	Enjoys moist position with pinky white flowers.
Carrot Tops	Platysace linearifolia	Delicate fine-leaved open shrub with soft weeping foliage. Dense clusters of delicate white flowers.
Graceful Bush Pea	Pultanea flexilis	Tall light shrub with soft hairy leaves, yellow and red pea flowers in Spring.
Fringe-myrtle	Calytrix tetragona	Star-shaped white flowers.
Crowea	Crowea saligna	Thin leaves with bright pink flowers.
Native Fuschia	Epacris longiflora	Bell-shaped red to white flowers.
Grey Spider -flower	Grevillea buxifolia	Grey flowers with fine hairs covering.
Dagger Hakea	Hakea teretifolia	Spiky leaves and white to cream flowers.
Pink Capitata	Kunzea capitata	Bright purple to violet flowers in button-like heads.
Honey Flower/ Mountain Devil	Lambertia formosa	Large orange to red tubular flowers.
Grass Tree	Xanthorrhoea spp	Long grass-like leaves with a tall flower spike. The rich nectar is food for birds and insects.
<b>Groundcover and Low Shrubs:</b>		
Christmas Bells	Blandfordia nobilis	Erect tufted herb with red to yellow bell-shaped flowers.
River Rose	Bauera rubioides	Bell-shaped pink to purple flowers.
Variable Bossiaea	Bossiaea heterophylla	Erect shrub with flattened leaves and red flowers.
Calyptrix	Calyptrix tetragona	Erect shrub with small white flowers each with long sinuous feelers.



<b>C. SHELTERED MOIST GULLIES (SANDSTONE CRESTS)</b>		
<b>Trees:</b>		
Sydney Golden Wattle	Acacia decurrens	Soft green feathery leaves and prolific display of blossoms in Spring. Fast growing. Great screen plant.
Sydney peppermint	Eucalyptus piperita	A graceful tree. Grey fibrous trunk. Flowers early Summer.
Grey Gum	Eucalyptus punctata	Beautiful open-crowned tree with stunning grey, pink and orange bark.
Black Wattle	Callicoma serratifolia	Multi-trunked. Large coarsely toothed leaves, creamy yellow flowers.
Coachwood	Ceratopetalum apetalum	Bark smooth and mottled with leaves stiff and toothed. Small white flowers.
Forest oak	Allocasuarina torulosa	A small rounded tree. Cones are ball-like.
Sydney red gum or Smooth-barked apple	Angophora costata	Smooth pinkish bark with cream flowers.
Large-fruited red mahogany	Eucalyptus scias subsp. scias	Red, fibrous bark. Flowers June to December.
Cabbage-tree palm	Livistona australis	A tall mop-headed palm. Small yellowish cream flowers.
Turpentine	Syncarpia glomulifera subsp. glomulifera	A tall, handsome tree with prominent creamy-white flowers in clusters.
Water Gum	Tristanopsis laurina	Small spreading tree with attractive foliage and distinctive smooth trunk. Yellow flowers form dense clusters.
Cheese tree	Glochidion ferdinandi	A bushy shrub. Purplish leaves. Pale yellowish green fruit.
<b>Shrubs:</b>		
Heath Myrtle	Baecka imbricate	Small shrub, prefers moist position. Attractive pinkish-white flowers in Spring.
Swamp Banksia	Banksia robur	Low spreading shrub with unusual large stiff serrated leaves, yellow-green flower spike. Great feature plant.
Blackthorn	Bursaria spinosa	Flowers in late Summer - white.
Mock olive	Notelaea longifolia f. longifolia	Small yellowish flowers with deciduous petals. Fruits are bitter blackish and olive-like.
NSW Christmas Bush	Ceratopetalum gummiferum	Flowers are small and white. Fruits that swell to an attractive bright red in summer.
Common hop bush	Dodonaea triquetra	A soft leafy shrub. Green or reddish fruit, think soft leaves with a bitter flavour.



Graceful bush-pea	Pultenaea flexilis	Spectacular in flower. Flowers small, yellow with red markings. Flowers in Spring.
River Lomatia	Lomatia myracoides	Bushy shrub. Dense softly drooping green foliage. Small white grevillea flowers.
Ziera	Ziera smithii	Erect shrub with strongly fragrant foliage. Small white flowers.
Native parsnip	Platysace lanceolata	Erect leafy shrub. Flowers small white and dense.
Rough-fruit pittosporum	Pittosporum revolutum	Flowers are yellow and fragrant. Fruit is orange and popular with birds.
Swamp Paperbark	Melaleuca ericifolia	Soft corky bark. Great screening plant with white flower spikes. Good bird habitat.
Snow in Summer	Melaleuca linearifolia	Dense creamy flowers spikes. Great screening plant. Good bird habitat.
Native Broom	Viminaria juncea	Attractive upright rounded shrub with unusual long bluey-grey leaves. Massed bright yellow pea flowers.
<b>Groundcovers, grasses, vines and herbs:</b>		
Spiny-headed Mat-rush	Lomandra longifolia	Herb with tough strap-like leaves. Flowers are scented, prickly and clusted.
Native sarsaparilla or Sweet tea	Smilax glyciphylla	Small scrambler with wiry stems. Tiny yellowish flowers.
Wiry Panic/ Entolasia	Entolasia stricta	Wiry grass. Dense tufts of short leaves.
Broadleaf grass-tree	Xanthorrhoea arborea	A grass-tree. Long, stout spike and broad, bluish-green leaves.
Blue flax lily	Dianella caerulea	A sprawling herb. Rich blue flowers with yellow anthers.
Pomax	Pomax umbellata	A little spreading shrub with a chandelier-like flower arrangement.
Apple berry or Dumplings	Billardiera scandens	Slender climber or scrambler. Fruits are edible and tasty. Purple when ripe.
Weeping rice grass	Microlaena stipoides var. stipoides	A small slender grass with insignificant flowers.
Wionga-wonga vine	Pandorea pandorana	A vigorous, woody climber with spectacular cascades of flowers in Spring. Flowers white with purple markings.
Scrambling lily	Geitonoplesium cymosum	A climber. Tangles around trees and shrubs. Flowers are yellow to purplish green with yellow anthers.
Imperata	Imperata cylindrica var. major	An erect grass. Feathery-silky plume.
Saw sedge/ Tall Saw grass	Gahnia clarkei	A tall leafy sedge. The nut is shiny red-brown at maturity and 3mm long.



Sword sedge	Lepidosperma laterale	A leafy sedge. The base of the leaves is normally orange-reddish.
Fish bones	Lomandra obliqua	A small, stiff, sprawling herb with clustered flowers.
Woolly xanthosia	Xanthosia pilosa	A small struggling shrub. Few flowered. Flowers are greenish-white.
<b>Ferns:</b>		
False bracken fern	Calochlaena dubia	A graceful light green fern with yellow or brown stalk.
Bracken	Pteridium esculentum	An erect fern with harsh stiff fronds. Red-brown stalks.
<b>D. HANGING SWAMPS (SANDSTONE CRESTS):</b>		
<b>Shrubs:</b>		
Heathleaved/ Latern banksia	Banksia ericifolia	Cylindrical flowers in a spike. Nectar source for birds.
River Rose	Bauera rubioides	Forms dense entwined masses with pink flowers.
Christmas Bells	Blandfordia nobilis	Erect tufted herb with red to yellow bell-shape flowers.
Darwinia	Darwinia fascicularis var. fascicularis	Clusters of tiny pine-like leaves. Flowers white changing to red.
Red-fruited Sword Sedge	Gahnia sieberana	Tall leafy sedge, dense thickets blue-green leaf underside.
Crimson Bottlebrush	Callistemon citrinus	Crushed leaves have a lemon scent. Flowers have bright red filaments.
Heathy Parrot Pea	Dillwynia retorta	Small spreading shrub with masses of flowers with yellow and red markings.
Pink Tea-Tree	Leptospermum squarrosum	Small dense shrub, with masses of pink flowers and dark prickly foliage.
Fine-leaf Bush-pea	Pultenaea stipularis	Long slender leaves and yellow flowers.
Native Broom	Viminaria juncea	Attractive upright rounded shrub with unusual long bluey-grey leaves. Massed bright yellow pea flowers.
<b>E. COASTAL HEATHS (SANDSTONE CRESTS):</b>		
<b>Trees:</b>		
Saw toothed/ Old Man Banksia	Banksia serrata	Knobby grey bark and thick serrated leaves. Nectar for birds and marsupials.





Coastal Banksia	<i>Banksia integrifolia</i>	Leaves are stiff and leathery, dark-green above with white hairs below.
Scribbly Gum	<i>Eucalyptus racemosa</i>	Smooth-bark is pale with scribbles. Important Koala food tree.
Bastard/ Broad-leaved White Mahogany	<i>Eucalyptus umbra</i>	Thick tough leaves and fibrous bark.
<b>Shrubs:</b>		
Sydney Golden Wattle	<i>Acacia longifolia</i>	Robust shrub with flower heads a golden-yellow. Quick grower.
Myrtle Wattle	<i>Acacia myrtifolia</i>	Attractive red-tinged foliage and flower heads a pale yellow.
Scrub She-oak	<i>Allocasuarina distyla</i>	Dense bushy shrub. Male plant a rusty-red when in flower.
Sweet-scented Wattle	<i>Acacia suaveolens</i>	Pale yellow perfumed balls of flowers and blue-green leaves.
Baeckea	<i>Baeckea imbricata</i>	Leaves are broad and flat with flowers white to pinkish.
Heath-leaved Banksia/ Lantern Banksia	<i>Banksia ericifolia</i>	Cylindrical flower spike. Nectar source for birds.
Silver Banksia	<i>Banksia marginata</i>	Rounded shrub with leaves small and white below. Flower spikes yellow in colour.
Breynia	<i>Breynia oblongifolia</i>	Flowers tiny and reddish with leaves an olive green.
Common Correa	<i>Correa reflexa</i>	Leaves papery and heart shaped with flowers a red-white-green combination.
Eggs and Bacon	<i>Dillwynia retorta</i>	Small attractive fine-leaved shrub that bears a profusion of red and yellow pea flowers in Spring.
Hop Bush	<i>Dodonea triquetra</i>	Vigorous grower. Attractive 3 winged fruit green at first developing into rusty red.
Box-leaf Wax Flower	<i>Eriostemon buxifolius</i>	Leaves are short and broad and flowers pink.
Hop-Goodenia	<i>Goodenia ovata</i>	Leaves are broad and glossy and flowers yellow.
Dagger Hakea	<i>Hakea teretifolia</i>	Stiff prickly shrub with small Grevillea type white flowers and unusual 'mountain devil' type fruit. Excellent screen plant.
Broad-leaved Drumsticks	<i>Isopogon anemonifolius</i>	Leaves are narrow and flat with flowers yellow.
Butterfly Bush	<i>Kunzea ambigua</i>	Leaves are tiny and clustered with flowers white.
Rusty Petals	<i>Lasiopetalum ferrugineum</i>	Flowers are a rusty colour and appear permanently withered.
Coastal Tea Tree	<i>Leptospermum laevigatum</i>	Tall coastal shrub with white flowers.
Sticky Sword-Sedge	<i>Leptospermum squarrosum</i>	Flowers pink to white.



Hakea	<i>Hakea gibbosa</i>	Very prickly shrub with leaves covered in fine white hairs.
Spiky Mirbelia	<i>Mirbelia rubiifolia</i>	Flowers are a large rich rose-purple colour with pale purple markings.
Slender Rice Flower	<i>Pimelea linifolia</i>	Compact delicate small shrub with clusters of white flowers in Spring and Summer.
Carrot Tops	<i>Platysace linearifolia</i>	Flowers are white in dense clusters with soft thread-like foliage.
Native Mint Bush	<i>Prostanthera denticulata</i>	Low growing spreading shrub covered with mauve flowers.
Large-leaved Bush-pea	<i>Pultenaea daphnoides</i>	Slender attractive shrub with flowers yellow bearing red markings.
Elliptical Bush-pea	<i>Pultenaea elliptica</i>	Small erect shrub with flowers a rich yellow with dark red markings.
Mutton Wood	<i>Rapanea variabilis</i>	Flowers are pale yellow, tiny and clustered on the old wood.
Coast Westringia	<i>Westringia fruticosa</i>	Dense spreading shrub. Flowers are white with a long narrow throat.
Grass Tree	<i>Xanthorrhoea</i> spp.	Long grass-like leaves with a tall flower spike. The rich nectar attracts birds.
<b>Herbs, Climbers and Low Shrubs:</b>		
Apple Berry Dumplings	<i>Billardiera scandens</i>	Slender climber or scrambler with purple fruits which are edible.
Blue Flax Lily	<i>Dianella caerulea</i>	Tufted herb with flowers a rich blue.
Knobby Club Rush	<i>Ficinia nodosa</i>	A clump-forming sedge with spiklets in a dense globular cluster.
Dusky Coral Pea	<i>Kennedia rubicunda</i>	Robust twiner with large red pea-flowers bearing black markings.
Spiny-headed Mat-rush	<i>Lomandra longifolia</i>	Large tufted herb with tough strap-like leaves. Flowers edible and scented.
Crinkle Bush	<i>Lomatia silaifolia</i>	Low shrub with rigid, highly divided leaves. Tufted on ground.
Snake Flower	<i>Scaevola ramosissima</i>	Herbaceous scrambler, with large bluish-mauve flowers.
Kangaroo Grass	<i>Themeda australis</i>	Tufted grass with brownish purplish spiklet clusters and a long, wiry flowering stem.
Saw Sedge	<i>Gahnia aspera</i>	A small sedge. The nut is shiny yellowish to red-brown.



## 2. COASTAL PLAINS

These are level to slightly undulating sandy areas which occur in sheltered locations in the vicinity of Palm Beach. Most of the original vegetation has been removed due to residential development.

COMMON NAME	SCIENTIFIC NAME	CHARACTERISTIC
<b>Trees</b>		
Sydney Wattle	<i>Acacia decurrens</i>	Tall shrub to small tree 3–10 m; bark smooth to deeply fissured, bright yellow flowers
Sally Wattle	<i>Acacia floribunda</i>	Dense round shrub. Cylindrical, pale-yellow flower head.
Black She-oak	<i>Allocasuarina littoralis</i>	Cylindrical cones. Deeply fissured bark with ridges of hard cork.
Rough -Barked Apple	<i>Angophora floribunda</i>	Fibrous, brown bark on all limbs. Contorted upper limbs.
Coastal Banksia	<i>Banksia integrifolia</i>	Leaves are stiff and leathery with dark-green above and white hairs below.
Old Man Banksia	<i>Banksia serrata</i>	Knobbly grey bark and thick serrated leaves. Nectar for birds and marsupials.
Swamp Mahogany	<i>Eucalyptus robusta</i>	Rough, fibrous bark on all branches and a favoured koala food tree.
Bangalay Gum	<i>Eucalyptus botryoides</i>	Rough reddish bark, short trunk and spreading crown. Flowers January-March.
Grey Ironbark	<i>Eucalyptus paniculata</i>	Deeply furrowed. Tall trunk with beautiful crown of leaves. Creamy yellow flowers.
Port Jackson Fig	<i>Ficus rubiginosa</i>	Rusty leaf undersides with a purple fig fruit eaten by birds, bats and flying foxes.
Cheese Tree	<i>Glochidion ferdinandi</i>	Bushy. Leaves discoloured purplish brown. Yellowish-green fruit.
Coastal Tea Tree	<i>Leptospermum laevigatum</i>	Tall coastal shrub with white flowers.
<b>Shrubs:</b>		
Sydney Golden Wattle	<i>Acacia longifolia</i>	Robust sprawling shrub; flower heads a golden-yellow.
Straight Wattle	<i>Acacia stricta</i>	Open upright shrub with pale green leaves. Bright yellow flowers in Spring.
Sweet-scented Wattle	<i>Acacia suaveolens</i>	Pale yellow perfumed balls of flowers and blue-green leaves.
Prickly Moses	<i>Acacia ulicifolia</i>	Small prickly attractive shrub. Bright yellow flowers. Excellent small bird habitat.
Achronychia	<i>Achronychia oblongifolia</i>	Large attractive shrub with lush green growth and attractive white fleshy edible fruits.

Aotus	<i>Aotus ericoides</i>	Flowers yellow with red markings. Usually very dense on the branches.
Heath-leaved Banksia	<i>Banksia ericifolia</i>	Rounded densely growing. Long orange flower spikes in Winter. Very decorative. Good screening plant.
Small Leafless Bossiaea	<i>Bossiaea ensata</i>	Weakly erect. Usually leafless. Flowers yellow with red markings.
Breynia	<i>Breynia oblongifolia</i>	Attractive shrub. Can become good screen plant.
Stiff Leaved Bottlebrush	<i>Callistemon lineari-folius</i>	Erect shrub with bright red bottlebrush flowers in Spring.
Clerodendrum	<i>Clerodendrum tomentosum</i>	Tall open shrub. Clusters of creamy white flowers in Summer.
Blue Flax Lilly	<i>Dianella congesta</i>	Gently weeping with sprays of vibrant blue and yellow flowers. Strap like leaves.
Hop Bush	<i>Dodonea triquetra</i>	Vigorous grower. Attractive 3 winged fruit. Green at first developing into a rusty red.
Corkwood	<i>Duboisia myoporoides</i>	Pale corky bark. Small shiny black berries. Flowers October-November.
Pink Wax Flower	<i>Eriostemon australasius</i>	Large pink flowers and thick grey-green foliage. Spectacular mass of flowers in Spring.
Cherry Ballart	<i>Exocarpus cupressiformis</i>	Dense drooping foliage. Fruit is hard and green and rests on a swollen red stalk which is edible when ripe.
Broad-leaf Wedge pea	<i>Gompholobium latifolium</i>	Erect shrub. Flowers are large lemon-yellow.
Bushy Needlebrush	<i>Hakea sericea</i>	Attractive. Good small bird habitat due to prickles. Small white flowers and woody fruit.
Dagger Hakea	<i>Hakea teretifolia</i>	Stiff prickly shrub with small white flowers and 'mountain devil' type fruit. Screen plant.
Dogwood	<i>Jacksonia scoparia</i>	Unusual erect shrub with greyish-green leafless foliage and prolific yellow and red pea flowers. Flowers have scent.
Butterfly Bush/ White Flowering Kunzea Bush	<i>Kunzea ambigua</i>	Spreading shrub with dense foliage. Great screen plant. Quick grower.
Rusty Petals	<i>Lasiopetalum macrophyllum</i>	Dense leaves with rusty veins. Flowers are dense rusty-felt, pale green and hairless.
Coastal Tea-tree	<i>Leptospermum laevigatum</i>	Leaves long and green. Flowers white August-October.
Lemon-scented Tea-tree	<i>Leptospermum polygalifolium</i>	Graceful shrub. Soft lemon-scented leaves and abundant white open flowers in Spring.
Paperbark Tea-tree	<i>Leptospermum trinervium</i>	Stout trunk and papery bark.
Burrawang	<i>Macrozamia communis</i>	Fern-like plant with spikey leaves. Leaves are tough, thick and sharply pointed.

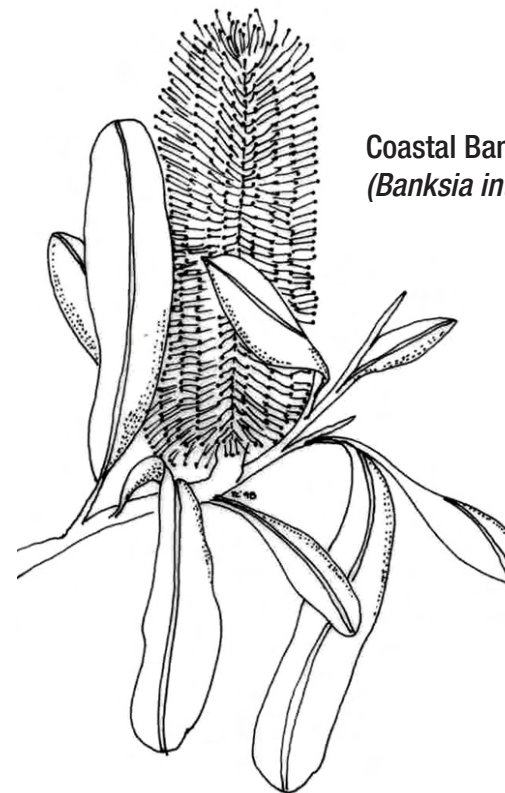




Monocota	Monotoca elliptica	Compact and dense. Green pointed leaves close to stem. Tiny white petals and attractive red to orange fleshy fruit.
Mock Olive	Notelaea longifolia	Dry leathery leaves. Small distinct flowers. Fruits resembling small olive.
Broad-leaved Geebung	Persoonia levis	Black flaky-papery bark which is brilliant red underneath. Large rich green leaves.
Narrow-leaved Geebung	Persoonia linearis	Black flaky-papery bark which is brilliant red underneath. Narrow dull green leaves.
Rough-fruit Pittosporum	Pittosporum revolutum	Yellow fragrant flowers in Spring. Rough fruit pod that opens to brilliant red seeds.
Native Parsnip	Platysace lanceolata	Erect and leafy. Flowers white and dense.
Elderberry Panex	Polyscias sambucifolia	Tough wooded shrub, flowers are greenish with yellow anthers.
<b>Groundcovers, Grasses, Vines and Herbs:</b>		
Apple Berry or Dumplings	Billardiera scandens	A slender climber. Edible tasty fruit. Drooping cream flowers.
Native Sedge	Carex appressa	Graceful attractive sedge with dense, bright green narrow leaves and attractive flower spikelets.
Forest Clematis or Old Man's Beard	Clematis glycinoides	White flowers August-October. A vigorous twining climber.
Barbed-wire Grass	Cymbopogon refractus	A tufted grass with tall wiry stems. Leave are aromatic when crushed.
Blue Flax Lily	Dianella caerulea	A herb. Rich blue flowers with yellow anthers.
Blue Flax Lilly	Dianella congesta	Gently weeping with sprays of vibrant blue and yellow flowers. Strap like leaves.
Forest Hedgehog Grass	Echinopogon ovatus	Tufted perennial grass. Flowers in Spring.
Wiry Panic	Entolasia stricta	A wiry grass usually dense.
Wombat Berry	Eustrephus latifolius	A climber. Fruits are edible orange berries. Produces a cluster of white tuberous roots which are edible raw.
Tall Saw Sedge	Gahnia clarkei	Shiny green leafy sedge. Feature plant with red-brown fruit on spikelets.
Love Creeper	Glycine clandestina	A slender twiner. Flowers mainly mauve October-December.
Germander Raspwort	Gonocarpus teucrioides	Small erect herb with rounded leaves. Flowers in spikes September-February.
Hardenbergia or False Sarsaparilla	Hardenbergia violacea	An attractive scrambler with rich, purple pea-flowers with pale yellow centres.
Golden Guinea Flower	Hibbertia scandens	Vigorous scrambler with dense foliage and red succulent fruits which attract birds.
Blady Grass	Imperata cylindrica	An erect grass. Feathery-silky inflorescence.



Knobby Club-rush	Ficinia nodosa	An erect sedge. Reddish-brown spikelets in dense clusters.
Dusky Coral Pea	Kennedia rubicunda	A robust twiner with large, red pea-flowers and stems several metres long.
Spiny-headed Mat-rush	Lomandra longifolia	A large herb with tough, strap-like leaves. Flowers can exude a heavy lacquer scent.
Wonga-Wonga Vine	Pandorea pandorana	A vigorous, woody climber with spectacular cascades of flowers in Spring. Flowers are white with purple markings.
Pomax	Pomax umbellata	A little spreading shrub with chandelier-like flower arrangement
Pastel Flower	Pseuderanthemum variabile	Small erect herb. Flowers are pale mauve, pale blue, pale pink or white.
<b>Ferns:</b>		
Common Maidenhair Fern	Adiantum aethiopicum	A delicate fern usually occurring in dense colonies.
Mulga Fern	Cheilanthes sieberi	A small harsh fern, often with a shrivelled appearance.



**Coastal Banksia**  
(*Banksia integrifolia*)



### 3. BEACH AND DUNES

Composed of fore dune and hind dune with varying areas of exposure to salt and wind.

COMMON NAME	SCIENTIFIC NAME	CHARACTERISTIC
<b>Shrubs/ Low Trees:</b>		
Sydney Golden Wattle	Acacia longifolia var. sophorae	Robust sprawling shrub with golden-yellow flower heads.
Coastal Banksia	Banksia integrifolia	Leaves stiff and leathery, dark-green above with white hairs below.
Coastal Saltbush	Rhagodia candolleana (formerly R. baccata)	Small dense shrub with flattened red succulent fruit.
Coastal Tee Tree	Leptospermum laevigatum	Tall coastal shrub with white flowers
Coastal Beard-heath	Leucopogon parviflorus	Prickly shrub with white flowers and succulent edible fruit.
<b>Groundcover:/ Low Shrubs</b>		
Beach Bean	Canavalia maritima	Robust creeper with flowers pink to violet in colour.
Pig Face	Carpobrotus glaucescens	Robust creeping herb with succulent leaves & bright pink flowers. Purple fruits are edible.
Golden Guinea Flower	Hibbertia scandens	Vigorous scrambler with dense foliage, large yellow flowers and red succulent fruits which attract birds.
Blue Flax Lily	Dianella congesta	Tufted herb with rich-blue flowers.
Spiny-headed Mat-rush	Lomandra longifolia	Large tufted herb with tough strap like leaves. Flowers edible and scented.
Coastal Geranium	Pelargonium australe	Erect herb with pink flowers and leaves along the stem tufted at base.
Snake flower/ Purple Fanflower	Scaevola calandulacea	Scrambling herb with purple fan-shaped flowers.
Spinifex Grass	Spinifex sericeus	Course robust dune grass with spidery mobile seed heads.
Dusky Coral Pea	Kennedia rubicunda	Robust twiner with large red pea flowers with black markings.
White Correa	Correa alba	Small shrub, leaves are oval shaped, greyish in colour with the undersurface covered with short hairs. Flowers are white.
Slender Rice Flower	Pimelea linifolia	Compact delicate small shrub with clusters of white flowers in Spring and Summer.
Knobby Club Rush	Ficinia nodosa	A clump-forming sedge with spiklets in a dense globular cluster.



### 4. SHALE SLOPES

These are usually steep slopes which either occur below the Hawkesbury Sandstones, or have Narrabeen Shales and sandstones as the parent material. They generally support open forest communities.

<b>A. OPEN FOREST</b>		
COMMON NAME	SCIENTIFIC NAME	CHARACTERISTIC
<b>Trees</b>		
Black She-oak	Allocasuarina littoralis	Good screen tree. Deep fissured bark and cones cylindrical with flat apex.
Forest Oak	Allocasuarina torulosa	Good screen tree. Deep fissured bark and cones ball-like.
Sydney Red Gum/ Smooth-barked Apple	Angophora costata	Orange to salmon coloured smooth bark. Branches contort and twist.
Roughbarked Apple	Angophora floribunda	Bark is brown and fibrous on all limbs with contorted upper limbs.
NSW Christmas Bush	Ceratopetalum gummiferum	Flowers small and white. Fruits swell to an attractive bright red in summer.
Bangalay Gum	Eucalyptus botryoides	Rough reddish bark with salt resistant leaves.
Spotted Gum	Eucalyptus maculata	Tall tree with smooth spotted-skin bark.
Blueberry Ash	Elaeocarpus reticulatus	Small tree with attractive fringed and bell shaped white flowers.
Grey Gum	Eucalyptus punctata	Grey bark with large cream patches. Favoured koala food tree.
Bastard Mahogany	Eucalyptus umbra	Deep fibrous bark with leaves thick and tough.
Port Jackson Fig	Ficus rubiginosa	Small tree. Purple figs with warty markings. Leaves have furry layer of rusty coloured hairs on the lower surface.
Turpentine	Syncarpia glomulifera	Straight trunk with deep fibrous bark and flowers cream to white in clusters
<b>Shrubs :</b>		
Blackthorn	Bursaria spinosa	Flowers in late Summer - white.
Matchheads	Comesperma ericinum	Slender shrub with bright pink to purple clusters of matchhead-like flowers.
Hop Bush	Dodonaea triquetra	Soft leafy shrub with thin textured leaves.
Pink Spider Flower	Grevillea sericea	Flowers are pink to purple tolerating dry, open areas.
White Spider Flower	Grevillea linearifolia	Graceful slender shrub with flowers a variety of white/red/pink in colour.
Dogwood	Jacksonia scoparia	Grey to green leafless shrub. Flowers are yellow with red markings.
Paperbark Tea-tree	Leptospermum trinervium	Stout trunk and papery-flaky bark with white flowers.





Burrawang Palm	Macrozamia communis	Large tufted fern-like shrub with long spiky leaves and fleshy red seeds.
Mock Olive	Notelaea longifolia	Leaves are olive green. Fruits black olive-like.
Bleeding Heart	Omalanthus populifolius	Large heart-shaped leaves turning red before falling.
Native Holly	Oxylobium ilicifolium	Erect spikey shrub, flowers yellow with red markings.
Everlasting or Paper Daisy	Ozothamnus diosmifolium	Leave are tiny narrow and dark green. Flowers are white and daisy-like.
Flat-pea	Platylobium formosum	Scrambling pea-shrub with leaves heart-shaped and flowers yellow with red markings.
Carrot Tops	Platysace linearifolia	White flowers in dense clusters and soft thread-like foliage.
Elderberry Panax	Polyscias sambucifolia	Flowers green to yellow in clusters with purple fruits.
Elliptical Bush-pea	Pultenaea elliptica	Small erect shrub with flowers rich yellow with dark red markings.
Rapanea	Rapanea variabilis	Tiny pale-yellow flowers clustered on old wood.
Waratah	Telopea speciosissima	Spectacular crimson flower. Rare in Pittwater due to illegal picking of flowers.
Native Peach	Trema aspera	Leaves are an elegantly shaped like peach tree leaves with bisexual flowers.
Wikstroemia	Wikstroemia indica	Leaves hairless and soft with shiny red fruiting berries.
Wilkiea Grass Tree	Wilkiea huegeliana Xanthorrhoea spp.	Stiff leathery leaves with yellow flowers. Long grass-like leaves with a tall flower spike. The rich nectar is food for birds and insects.
Zieria	Zieria smithii	Strong fragrant foliage with tiny pink flowers.
<b>Herbs, Climbers, Grasses and Scramblers</b>		
Appleberry	Billardiera scandens	Slender climber or scrambler with edible purple fruits.
Barbed Wire Grass	Cymbopogon refractus	Seed head looks like the twist in a barbed wire. Tall wiry stems and greyish-green aromatic leaves.
Wallaby Grass	Danthonia species	Erect clumping grass. Fluffy open seed spikelets. Good feature plant.
Desmodium	Desmodium rhytidophyllum	Scrambler with rusty felt all over leaves and tiny pink flowers.
Plume Grass	Dichelachne sp.	Distinctive flowering plume. Delicate tufting grass. Excellent landscaping feature.
Kangaroo Grape	Cissus antarctica	Robust woody climber with glossy black edible fruit.
Entolasia	Entolasia species	Erectly sprawling grass with leaves angled at right angles to stem. Slender seed heads.



False Sarsparilla/ Sweet Tea	Hardenbergia violacea	Attractive twiner with rich purple pea flowers. Leaves boil to a tea.
Twining Guinea Flower	Hibbertia dentata	Scrambling vine with toothed leaves and yellow flowers.
Dusky Coral Pea	Kennedia rubicunda	Robust twiner with large red pea-flowers with black markings.
Basket Grass	Oplismenus species	Creeping broad leaved grass. Alternative to lawn. Prolific grower.
Weeping Meadow Grass	Microleana stipoides	Softly weeping clumping grass. Alternative to lawn. Non-allergenic or asthmatic.
Jasmine Morinda	Morinda jasminoides	Scrambling climber. Flowers cream with orange-blossom fragrance.
Wonga-Wonga Vine	Pandorea pandorana	Tall woody climber with white cascades of flowers in Spring
Snake Vine	Stephania japonica	Climber with leaves heart-shaped and fruit shiny yellow to orange or red.
<b>Ferns</b>		
Blechnum	Blechnum spp.	Fern with leathery fronds.
Rasp Fern	Doodia aspera	Small erect fern with rough fronds.
Common Maidenhair	Adiantum aethiopicum	Delicate fern found in dense colonies.
Umbrella Fern	Sticherus flabellatus	Erect fern to 1 m high with fronds finely toothed.
Woolly Xanthosia	Xanthosia pilosa	Small herbaceous groundcover. Woolly leaves and tiny cluster of greenish-white flowers.
<b>B. COASTAL HEATHS (ON SHALE SLOPES)</b>		
<b>Trees:</b>		
Lilly Pilly/ Broad-leaf Lillypilly	Acmena smithii	Dense dark glossy foliage with fruit succulent and edible.
Coastal She-Oak	Allocasuarina distyla	Dense and brushy with male flowers a rusty-red in colour.
Drooping She-oak	Allocasuarina verticillata	Softly drooping grey-green foliage. Found in Mona Vale, Bungan Beach and Newport.
Coastal Banksia	Banksia integrifolia	Leaves are a stiff, leathery dark-green above with white hairs below.
<b>Shrubs:</b>		
Sydney Golden Wattle	Acacia longifolia var. sophorae	Robust sprawling shrub; flower heads a golden-yellow. Quick grown. Sunny position.
Myrtle Wattle	Acacia myrtifolia	Attractive red-tinged foliage with flower heads pale yellow. Small compact shrub to 0.5m.
Sweet-Scented Wattle	Acacia suaveolens	Pale yellow perfumed balls of flowers and blue-green leaves.
Breynia	Breynia oblongifolia	Flowers are tiny reddish with leaves an olive green.



Common Correa	Correa reflexa	Leaves are papery and heart shaped with flowers a red-white-green mix.
Stiff Bottlebrush	Callistemon rigidus	Leaves are stiff and rough and flowers have red filaments.
Saw Sedge	Gahnia melonocarpa	Taller leafy sedge. Great feature plant with spikelets developing masses of shiny black nuts.
Goodenia	Goodenia ovata	Leaves are broad and glossy with flowers yellow.
Dagger Hakea	Hakea teretifolia	Stiff prickly shrub with small white flowers and 'mountain devil' type fruit. Excellent screen plant.
Dogwood	Jacksonia scoparia	Unusual erect shrub with greyish-green leafless foliage and prolific yellow and red pea flowers. Flowers have scent.
Butterfly Bush/ White Flowering Kunzea	Kunzea ambigua	Leaves are tiny and clustered with flowers white.
Rusty Petals	Lasiopetalum ferrugineum	Flowers a rusty colour. Attractive foliage; long green leaves and white undersides.
Coastal Tee Tree	Leptospermum laevigatum	Tall coastal shrub with white flowers.
Native Parsley Bush	Lomatia silaifolia	Rigid and highly divided leaves forming a tuft with white flowers.
Toothed Daisy Bush/ Native Daisy	Olearia tomentosa	Attractive coastal shrub. Soft hairy leaves. White-yellow daisy flowers.
Native Mint Bush	Prostanthera denticulata	Dense low-growing spreading shrub covered with delicate mauve flowers in Spring.
Melaleuca	Melaleuca hypericifolia	Aromatic leaves and flowers with large rusty-red spikes.
Rough Fruit Pittosporum	Pittosporum revolutum	Yellow fragrant flowers with a large fruit pod opening to reveal brilliant red seeds.
Native Parsnip	Platysace lanceolata	Spear-shaped thin leaves with white flowers in dense clusters.
Elderberry Panex	Polyscias sambucifolia	Tough wooded shrub, flowers are greenish with yellow anthers.
Large-leafed Bush-pea	Pultenaea daphnoides	Slender attractive shrub with yellow flowers with red markings.
Elliptical Bush-pea	Pultenaea elliptica	Small erect shrub bearing rich yellow flowers with dark red markings.
Rapanea	Rapanea variabilis	Flowers are a pale yellow and tiny, found clustered on old wood.
Coastal Rosemary	Westringia fruticosa	Dense spreading shrub with long narrow throated white flowers.
Zieria	Zieria smithii	Strong fragrant foliage with tiny pink flowers.



<b>Herbs, Climbers, Grasses and Scramblers</b>		
Flannel Flowers	Actinotus helianthi	Stunning white softly hairy daisy type flowers tipped with green on edge of petals.
Appleberry	Billardiera scandens	Slender climber or scrambler with edible purple fruits.
Centella	Centella asiatica	Creeping herb with serrated leaves.
Native Clematis	Clematis aristata	Vigorous twining dense climber with fluffy clusters of white flowers in Spring.
Desmodium	Desmodium varians	Beautiful tiny leaved creeper with prolific sprays of pink pea flowers most of the year.
Dianella	Dianella caerulea	Tufted herb with rich blue flowers.
Knobbly Club Rush	Ficinia nodosa	Clump forming sedge with spikelets in dense globular clusters.
Love Creeper	Glycine sp.	Slender twiner. Flowers are variable in colour pink-mauve to blue sprays in Spring-Summer.
Hop Goodenia	Goodenia ovata	Small bushy herb. Soft glossy leaves. Bright yellow flowers. Attracts butterflies.
Golden Guinea Flower	Hibbertia scandens	Vigorous scrambler with spectacular flowers. Brilliant red succulent fruits attract birds.
Dusky Coral Pea	Kennedia rubicunda	Robust twiner with large red pea flowers and black markings.
Spiny-headed Mat-rush	Lomandra longifolia	Large tufted herb with tough strap-like leaves and edible, scented flowers.
Snake Vine	Stephania japonica var. discolor	Climber or scrambler with leaves heart-shaped and fruits a shiny yellow/orange.
Kangaroo Grass	Themeda australis	Tufted grass with brown to purplish spikelet clusters and a long, wiry flowering stem.
<b>C. CLOSED FORESTS (RAINFORESTS) (SHALE SLOPES):</b>		
<b>Trees</b>		
Hickory Wattle	Acacia implexa	Light willowly foliage with pale yellow flower heads.
Broad-leaf Lillypilly	Acmena smithii	Dense dark, glossy foliage with winter fruit edible.
Forest She-oak	Allocasuarina torulosa	Beautiful rounded shaped tree with softly drooping foliage.
Grey Myrtle	Backhousia myrtifolia	Flowers are cream with leaves a dark green.
Willow Bottlebrush	Callistemon salignus	Small tree with paperish bark and yellow-white bottlebrush flowers.
Murrogun	Cryptocarya microneura	Leaves fragrant when crushed and masses of white flowers.
Black Plum	Diospyros australis	Flowers are white with fruit a shiny black berry and leaves an oblong shape.



Bangalay	Eucalyptus botryoides	Rough reddish bark, short trunk and spreading crown.
Guioa	Guioa semiglauc	Flowers are small, fruit is a 3 winged capsule and leaf undersurface grey/green.
Coachwood	Ceratopetalum apetalum	Bark smooth and mottled with leaves stiff and toothed and small white flowers.
Sandpaper Fig	Ficus coronata	Very rough leaves with figs eaten by many birds and mammals.
Port Jackson Fig.	Ficus rubiginosa	Rusty leaf undersides with figs eaten by bats, birds, flying foxes.
Cheese Tree	Glochidion ferdinandi	Bushy shrub with pale yellow fruits.
Cabbage Tree Palm	Livistona australis	Tall mop-headed palm with tough, shiny leaves. Only native palm tree.
Turnipwood	Rapanea howittiana	Leaves are glossy and hairless with flowers small and cluster on old wood.
Crab Apple	Schizomeria ovata	Leaves are glossy, toothed and dense. Flowers are white and fruit fleshy.
Turpentine	Syncarpia glomulifera	Straight trunked tree with deep fibrous bark and cream/white flower clusters.
Blue Lillypilly	Syzygium oleosum	Dark dense foliage with a succulent blue fruit edible by animals.
Magenta Lilly Pilly	Syzygium paniculatum	Glossy green foliage. Pretty edible succulent pink to red fruits in Summer.
<b>Shrubs:</b>		
Native Hydrangea	Abrophyllum ornans	Elegant. Large soft irregularly toothed leaves, small green-yellowish spray of flowers in Summer. Dark purple berries.
Wild Quince	Alectryon subcinereus	Small tree or shrub with branchlets and inflorescences finely hairy.
Brush Turpentine	Rhodamnia rubescens	Shrub or small tree to 25 m high, bark reddish brown, fissured.
Red Fruited Olive Plum	Cassine australis	Broad green leaves with wavy margins. Bright orange fruit.
Orange Thorn	Citriobatus pauciflorus	Stiff wiry shrub with fine thorns and small delicate leaves. Fine white flowers developing into a bright orange berry. Great bird habitat.
Brittle Wood	Claoxylon australe	Broad leaf with greenish flowers in Summer.
Clerodendrum	Clerodendrum tomentosum	Young plants common with soft furry leaves with flowers moth pollinated.
Native Guava	Eupomatia laurina	Flowers white with fruits yellow-purple and edible.
Rough-fruit Pittosporum	Pittosporum revolutum	Flowers are yellow and fragrant with fruit an orange warty box-shape which is favoured by birds.
Elderberry Panex	Polyscias sambucifolia	Tough woody shrub with greenish flowers and yellow anthers.



Scentless Rosewood	Synoum glandulosum	Leafy shrub with red capsule fruit and flowers a creamy-white to pink mix.
Native Peach	Trema aspera	Fast grower. Good screening shrub. Small black berries attractive to birds.
Tree Heath	Trochocarpa laurina	Unusual large shrub with leaves forming red drooping umbrella-like clusters at the tips of the branches. Small white flower spikes.
Wilkiea	Wilkiea huegeliana	Stiff leathery, toothed leaves with flowers yellow and fruiting. It is favoured by a rare butterfly.
<b>Herbs, Climbers, Grasses and Scramblers</b>		
Gum Vine	Aphanopetalum resinosum	Woody climber with leaves glossy and toothed and flowers greenish.
Native Sedge	Carex appressa	Graceful attractive sedge with dense, bright green narrow leaves and attractive flower spikelets.
Kangaroo Grape	Cissus antarctica	Robust woody climber with glossy black, edible fruit.
Water vine	Cissus hypoglauc	Robust woody vine with black grape-like fruits edible by animals.
Swordsedge	Gahnia sieberiana	Tall leafy sedge found in dense thickets.
Settlers Flax	Gymnostachys anceps	Unusual, attractive and tall flax. Dark shiny black fruit.
Branching Flag Grass	Libertia paniculata	Tufted herb with strap leaves to 0.5m with tall sprays of white flower heads in Spring.
Spiny-headed Mat-rush	Lomandra longifolia	Tough strappy leaved tufted shrub. Sweetly pale yellow flower spike in Spring.
Jasmine Morinda	Morinda jasminoides	Scrambling climber with masses of soft leaves and orange fragrant flowers.
Basket Grass	Oplismenus imbecillis	Creeping broad leaved grass. Excellent groundcover. Prolific grower in Summer.
Wonga-Wonga Vine	Pandorea pandorana	Tall woody climber with white flowers in large drooping masses.
<b>Ferns:</b>		
Rough Tree Fern	Cyathea australis	Treefern with warty projections on it's stalk.
Necklace Fern	Asplenium flabellifolium	A weak fern with trailing fronds.
Umbrella Fern	Sticherus flabellatus	Erect fern with fronds fanning in fine toothed segments.
Blechnum	Blechnum spp.	Fern with leathery fronds.
Rasp Fern	Doodia aspera	Small erect fern with rough fronds.
Common Maidenhair	Adiantum aethiopicum	Delicate fern found in dense colonies.





## 5. ROLLING HILLS AND LOWER SLOPES

This landform consists of rolling hills and the lower sections of the Shale Slopes. It has been extensively cleared for residential development with very little original vegetation remaining.

<b>A. OPEN FORESTS AND FORESTS:</b>		
COMMON NAME	SCIENTIFIC NAME	CHARACTERISTIC
<b>Trees:</b>		
Sydney Green Wattle	<i>Acacia parramattensis</i>	Erect shrub or tree 2–15 m high; bark greenish black or dark brown to black. Flowers pale to bright yellow.
Sickle Wattle	<i>Acacia falcata</i>	Small unusual tree with soft-drooping foliage and attractive red bark.
Hickory Wattle	<i>Acacia implexa</i>	Light green sickle-shaped leaves. Bears cream wattle flowers during Summer.
Forest Oak	<i>Allocasuarina torulosa</i>	Deep fissured bark its cones ball-like in shape.
Sydney Red-gum/ Smooth-barked Apple	<i>Angophora costata</i>	Orange to salmon coloured bark. Branches contort and twist.
Rough-barked Apple	<i>Angophora floribunda</i>	Bark is brown and fibrous on all limbs with contorted upper limbs.
Hard Corkwood	<i>Endiandra sieberi</i>	Thick corky bark. Large fruit. Tough glossy leaves.
Spotted Gum	<i>Eucalyptus maculata</i>	Tall tree with smooth, spotted bark.
Bangalay Gum	<i>Eucalyptus botryoides</i>	Rough reddish bark and salt resistant leaves.
Grey Ironbark	<i>Eucalyptus paniculata</i>	Deeply furrowed ironbark tree. Tall trunk, creamy yellow flowers.
Grey Gum	<i>Eucalyptus punctata</i>	Grey bark with large cream patches. Significant koala food source.
Bastard Mahogany	<i>Eucalyptus umbra</i>	Deep fibrous bark and thick/tough leaves.
Rapanea	<i>Rapanea variabilis</i>	Tiny pale yellow flowers clustered on old wood.
Turpentine	<i>Syncarpia glomulifera</i>	Straight trunk with deep fibrous bark and flowers in cream/white clusters.
<b>Shrubs:</b>		
Sweet Scented Wattle	<i>Acacia suaveolens</i>	Pale yellow perfumed flower balls.

Grey Myrtle	<i>Backhousia myrtifolia</i>	Spreading shrub with grey-green foliage, upright habit and has creamy-green star-shaped flowers clustered on tips.
Hairpin Banksia	<i>Banksia spinulosa</i>	Banksia flower and major food source for birds and possums.
Blackthorn	<i>Bursaria spinosa</i>	Flowers in late Summer - white.
Narrow leaved bottlebrush	<i>Callistemon linearifolium</i>	Leaves stiff and hairless and flowers with bright red filaments providing nectar for birds.
Willow Bottlebrush	<i>Callistemon salignus</i>	Small tree. Papery bark with creamy yellowish bottlebrush flowers in Summer to Autumn.
NSW Christmas Bush	<i>Ceratopetalum gummiferum</i>	Small white flowers with attractive bright red fruits.
Clerodendrum	<i>Clerodendrum tomentosum</i>	Tall open shrub. Clusters of creamy white flowers in Summer.
Hop Bush	<i>Dodonaea triquetra</i>	Soft leafy shrub with thin -textured leaves.
Pink Spider Flower	<i>Grevillea sericea</i>	Flowers an attractive pink to purple in colour.
Hop Goodenia	<i>Goodenia ovata</i>	Small bushy herb. Soft glossy leaves with bright yellow flowers.
Trailing Guinea Flower	<i>Hibbertia empetrifolia</i>	Sprawling multi-stemmed shrub.
Showy Guinea Flower	<i>Hibbertia linearis</i>	Erect shrub with straight and hairless leaves.
Paperbark Tea-tree	<i>Leptospermum trinervium</i> (formerly <i>L.attenuatum</i> )	Stout trunk with papery-flaky bark and white flowers.
Lemon Scented Tea-tree	<i>Leptospermum polygalifolium</i>	Leaves lemon-scented with bark hard not flakey.
Burrawang Palm	<i>Macrozamia communis</i>	Large tufted fern-like shrub with long spiky leaves and fleshy red seeds.
Maytenus	<i>Maytenus silvestris</i>	Leaves are tough with toothed upper ends and flowers are small white to pale green.
Paperbark	<i>Melaleuca hypericifolia</i>	Oily aromatic leaves with large rusty-red flower spikes.
Mock Olive	<i>Notelaea longifolia</i>	Flowers yellowish with black olive-like fruits.
Bleeding Heart	<i>Omalanthus populifolius</i>	Large heart-shaped leaves turning red before falling in Autumn.
Native Holly	<i>Oxylobium ilicifolium</i>	Erect spiky shrub bearing yellow flowers with red markings.
Everlasting Paper Daisy	<i>Ozothamnus diosmifolium</i>	Attractive shrub. Mildly scented leaves with dense white clusters of small white flowers.
Flat-pea	<i>Platylobium formosum</i> ssp. <i>formosum</i>	Scrambling pea-shrub with heart-shaped leaves.
Native Parsnip	<i>Platycscae lanceolata</i>	Flowers white and compact.
Elderberry Panex	<i>Polyscias sambucifolia</i>	Flowers are green to yellow in clusters and fruit is purple when ripe.
Large-leaved Bush-pea	<i>Pultenaea daphnoides</i>	Slender shrub with flower clusters dense yellow with red markings.



Elliptical Bush-pea	Pultenaea elliptica	Small erect shrub with rich yellow flowers with dark red markings.
Rapanea	Rapanea variabilis	Tiny pale yellow flowers clustered on old wood.
Native Peach	Trema aspera	Leaves rough and toothed and flowers can be bisexual.
Tree Heath	Trochocarpa laurina	Unusual large shrub with new leaves forming red drooping umbrella-like clusters at the tips of the branches. Small white flower spikes.
Broadleaf grass-tree	Xanthorrhoea arborea	A grass-tree. Long, stout spike and broad, bluish-green leaves.
Wilkea	Wilkea huegelii	Stiff leathery leaves with yellow flowers.
Zieria	Zieria smithii	Strong fragrant foliage with tiny pink flowers.
<b>Herbs, Climbers, Grasses and Scramblers:</b>		
Appleberry	Billardiera scandens	Slender climber or scrambler with edible purple fruits.
Water vine/ Native Grape	Cissus hypoglauca	Robust woody vine with edible fruits and stems several metres long.
Barbed Wire Grass	Cymbopogon refractus	Seed head looks like the twist of a barbed wire. Wiry stems and greyish-green aromatic leaves.
Desmodium	Desmodium rhytidophyllum	Scrambler with rusty felt all over leaves and tiny pink flowers.
Entolasia	Entolasia species	Erectly sprawling grass with leaves angled at right angles to stem. Good groundcover and habitat for native wildlife.
Wombat Berry	Eustrephus latifolius	Climber with striate green stems and edible succulent orange berries.
Saw-sedge	Gahnia melanocarpa	Tall leafy sedge which forms dense thickets.
Native Geranium	Geranium homeanum	Slender sprawling herb with delicate white flowers.
Love Creeper	Glycine clandestina	Slender twiner with variable flower colours.
Twining Guinea Flower	Hibbertia dentata	Scrambling vine with toothed leaves and yellow flowers.
Hydrocotyle peduncularis	Hydrocotyle	Trailing groundcover with lobed leaves and tiny green flowers.
Lobelia	Lobelia alata	Small delicate herb, fast prolific grower. Produces tiny sky blue flowers.
Spiny-headed Mat rush	Lomandra longifolia	Large tufted herb with tough strap-like leaves.
Weeping Meadow Grass	Microleana stipoides	Softly weeping clumping grass makes an excellent alternative to lawn. Requires little mowing.



Basket Grass	Oplismenus species	Creeping broad leaved grass, excellent groundcover or lawn grass.
Wonga-Wong Vine	Pandorea pandorana	Tall woody climber with cascades of flowers in Spring.
Native Poa Grass	Poa affinis	Bright green softly tufting local grass. Great feature plant.
Broad Leaf Native Raspberry	Rubus hillii	Robust climber with thorny stems. Fruit can be eaten.
Native Sarsaparilla / Sweet Tea	Smilax glyciphylla	Small scrambler with wiry stems and leaves boil to a bush tea.
Fringe Lily	Thysanotus tuberosus	Sprawling herb with an edible tuberous root.
Wilkea	Wilkea huegelii	Stiff leathery leaves and yellow flowers.
<b>Ferns:</b>		
Rasp Fern	Doodia aspera	Small erect fern with rough fronds.
Common Maidenhair	Adiantum aethiopicum	Delicate fern found in dense colonies.



**Stiff Bottlebrush**  
(*Callistemon rigidus*)



## 6. LOWLANDS

The original landscape type consisted of a mix of lagoons, swamps and wet plains. Some of these areas were drained by early European settlers for agriculture. Although large stands of these species have been destroyed, there are sufficient living indications of their presence.

COMMON NAME	SCIENTIFIC NAME	CHARACTERISTIC
<b>Trees:</b>		
Sally Wattle	<i>Acacia floribunda</i>	Fine delicate leaves and abundant sprays of pale yellow wattle blossoms.
Black She-oak	<i>Allocasuarina littoralis</i>	Small graceful tree with small cones and pine-like leaves, good screen plant.
Smooth-barked Apple/ Sydney Red Gum	<i>Angophora costata</i>	Smooth-barked tree, often pink to reddish colour with twisting upper limbs. Bright red leaf tips and cream flowers.
Rough Barked Angophora	<i>Angophora floribunda</i>	Fibrous bark. Abundant white flower clusters in Spring and Summer.
Old Man Banksia or Saw-toothed Banksia	<i>Banksia serrata</i>	Small tree. Leaves are large, stiff, leathery, evenly serrated, glossy and dark green. Spikes are grey-green.
Swamp She-oak	<i>Casuarina glauca</i>	Dense stands in swampy areas and creeklines trees have narrow branchlets.
Grey Gum	<i>Eucalyptus punctata</i>	Grey bark with large cream patches. Significant koala food.
Swamp Mahogany	<i>Eucalyptus robusta</i>	Rough fibrous bark on all branches and a favoured koala food.
Cabbage Tree Palm	<i>Livistona australis</i>	Tall mop-headed palm with leaves tough and shiny on a long toothed stalk.
Swamp Paperbark	<i>Melaleuca ericifolia</i>	Prefers swampy ground. Has corky bark with white flower spikes.
Snow-in-Summer	<i>Melaleuca linearifolia</i>	Paperbark with dense cream flowers.
Prickly-leaved Paperbark	<i>Melaleuca styphelioides</i>	Leave are stiff, twisted and sharply pointed. Flowers are in spikes.
<b>Shrubs:</b>		
Sydney Golden Wattle	<i>Acacia longifolia</i> var. <i>longifolia</i>	Hardy shrub with showy golden flowers.
	<i>Breynia oblongifolia</i>	Flowers tiny and reddish with leaves an olive green
Narrow-leaved Bottlebrush	<i>Callistemon linearis</i>	Erect shrub with red flower filaments and narrow leaves.
Dogwood	<i>Jacksonia scoparia</i>	An erect greyish-green leafless shrub. Flowers are yellow with red markings.

Everlasting Paper Daisy	<i>Ozothamnus diosmifolium</i>	Mildly scented leaves with dense white clusters of small white flowers.
Rough Fruit Pittosporum	<i>Pittosporum revolutum</i>	Yellow fragrant flowers with rough fruit pod that opens to reveal brilliant red seeds.
Elderberry Panax	<i>Polyscias sambucifolia</i>	Erect shrub. Tough wood. Flowers greenish with yellow anthers.
Pultenaea	<i>Pultenaea daphnoides</i>	Slender shrub with dense flower clusters in yellow with red markings.
Native Broom	<i>Viminaria juncea</i>	Attractive upright rounded shrub with long blue-grey leaves. Bright yellow pea flowers.
<b>Groundcover:</b>		
Apple Dumplings	<i>Billardiera scandens</i>	Slender scrambling vine, soft furry leaves, tiny tubular creamy-green flowers developing sweet tasting edible fruit.
Baumea	<i>Baumea juncea</i>	Slender erect sedge. Grey-green leaves, small inflorescence.
Water Vine/ Native Grape	<i>Cissus hypoglauca</i>	Robust woody vine with edible black grape-like fruits.
Entolasia	<i>Entolasia species</i>	Erectly sprawling grass. Slender seed head. Good habitat for wildlife.
Knobbly Club Rush	<i>Ficinia nodosa</i>	Green upright sedge with clustered seed pod at tip of leaf. Fast grower and great feature plant.
Tall Saw-sedge	<i>Gahnia clarkei</i>	Tall leafy sedge found in dense thickets.
Native Sarsparilla	<i>Hardenbergia violacea</i>	Attractive scrambler with rich purple spray of flowers in Spring. Vigorous.
Golden Guinea Flower	<i>Hibbertia scandens</i>	Vigorous scrambler with spectacular flowers. Red succulent fruit attracts birds.
Rush	<i>Juncus kraussii</i>	Erect rush, forming dense clumps with thin sheath-like leaves. Saline soils, sunny.
Dusky Coral Pea	<i>Kennedia rubicunda</i>	Robust twiner with large red pea flowers with black markings.
Spiny-headed Mat rush	<i>Lomandra longifolia</i>	Large tufted herb with tough strap-like leaves.
Weeping Meadow Grass	<i>Microleana stipioides</i>	Softly sweeping clumping grass. Excellent alternative to lawn.
Basket Grass	<i>Oplismenus species</i>	Broad leaved grass, excellent groundcover or lawn grass.
Kangaroo Grass	<i>Themeda australis</i>	Beautiful tussock grass with bronze highlights in Autumn. Great feature plant.
Native Veronica	<i>Veronica plebaeia</i>	Attractive creeping groundcover with delicate crinkly leaves and small blue-purple flowers.





## 7. TIDAL FLATS

These exist mainly in the Careel Bay and Bayview areas. Some areas of this landform have been filled in the past for sporting and recreation facilities.

COMMON NAME	SCIENTIFIC NAME	CHARACTERISTIC
<b>Trees:</b>		
River Mangrove	<i>Aegiceras corniculatum</i>	Coloniser of brackish water providing habitat for water birds.
Grey Mangrove	<i>Avicennia marina</i>	Coloniser of shallow tidal waters and protection for wader birds.
Swamp She-Oak	<i>Casuarina glauca</i>	Forms dense stands with thick leaf branchlets and stumpy cylinder-shaped cones.
<b>Groundcover:</b>		
Sea Rush	<i>Juncus kraussii</i>	Tall coarse rush growing in clumps with dense brown flower spikes.
Glasswort / Samphire	<i>Salicornia quinqueflora</i>	Leafless herb with succulent stems. A saltmarsh coloniser.
Austral Seablite	<i>Suaeda australis</i>	Low, dense spreading herb which inhabits saltmarsh margins.



## Photo Gallery

Apple Berry (*Billardiera scandens*)



Austral Seablite (*Suaeda australis*)



Baeckea (*Baeckea imbricata*)



Ball Honeymyrtle (*Melaleuca nodosa*)



Bangalay Gum (*Eucalyptus botryoides*)



Banksia (*Banksia oblongifolia*)



Lillypilly (*Acmena smithii*)



Long-leaved Cassinia (*Cassinia longifolia*)



Love Creeper (*Glycine clandestina*)



Matchheads (*Comesperma ericinum*)



Maytenus (*Maytenus silvestris*)



Melaleuca (*Melaleuca hypericifolia*)



Bastard Mahogany (*Eucalyptus umbra*)



Beach Bean (*Canavalia maritima*)



Black Plum (*Diospyros australis*)



Black She Oak (*Allocasuarina littoralis*)



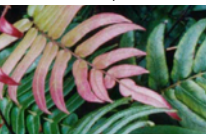
Black Wattle (*Callicoma serratifolia*)



Blackthorn (*Bursaria spinosa*)



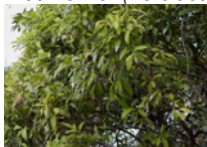
Blechnum (*Blechnum* spp.)



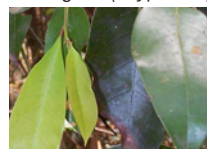
Bleeding Heart (*Omalanthus populifolius*)



Mock Olive (*Notelaea longifolia*)



Murrogun (*Cryptocarya microneura*)



Mutton Wood (*Rapanea variabilis*)



Myrtle Wattle (*Acacia myrtifolia*)



Narrowleafed Bottlebrush (*Callistemon linearifolium*)



Native Fuschia (*Epacris longiflora*)



Native Guava (*Eupomatia laurina*)



Native Holly (*Oxylobium ilicifolium*)



Blue Flax Lily (*Dianella caerulea*)



Blueberry Ash (*Elaeocarpus reticulatus*)



Bobialla (*Myoporum insulare*)



Box-leaf Wax Flower (*Eriostemon buxifolius*)



Breynia (*Breynia oblongifolia*)



Broad-leafed Drumsticks (*Isopogon anemonifolius*)



Broad-leafed Paperbark (*Melaleuca quinquenevia*)



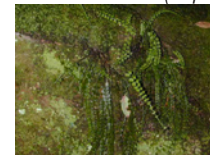
Native Parsnip (*Platycscae lanceolata*)



Native Peach (*Trema aspera*)



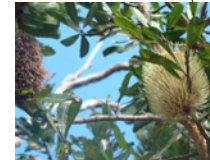
Necklace Fern (*Asplenium flabellifolium*)



NSW Christmas Bush (*Ceratopetalum gummiferum*)



Old Man Banksia (*Banksia serrata*)



Paperbark Tea-tree (*Leptospermum trinervium*)



Parramatta Green Wattle (*Acacia parramattensis*)

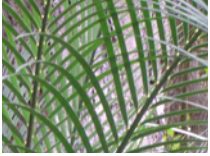




Broad-leaved Wedge Pea (*Gompholobium latifolium*)



Burrawang Palm (*Macrozamia communis*)



Butterfly Bush (*Kunzea ambigua*)



Cabbage Tree Palm (*Livistona australis*)



Calyptrix (*Calyptrix tetragona*)



Carrot Tops (*Platysace linearifolia*)



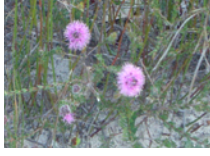
Centella (*Centella asiatica*)



Pig Face (*Carpobrotus glaucescens*)



Pink Capitata (*Kunzea capitata*)



Pink Spider Flower (*Grevillea sericea*)



Pink Tea-Tree (*Leptospermum squarrosum*)



Port Jackson Fig (*Ficus rubiginosa*)



Prickly Moses (*Acacia ulicifolia*)



Pultenaea (*Pultenaea elliptica*)



Cheese Tree (*Glochidion ferdinandi*)



Christmas Bells (*Blandfordia nobilis*)



Clerodendrum (*Clerodendrum tomentosum*)



Coachwood (*Ceratopetalum apetalum*)



Coast Westringia (*Westringia fruticosa*)



Coastal Banksia (*Banksia integrifolia*)



Coastal Geranium (*Pelargonium australe*)



Rasp Fern (*Doodia aspera*)



Red Bloodwood (*Eucalyptus gummifera*)



Red Spider Flower (*Grevillea speciosa*)



Red-fruited Sword Sedge (*Gahnia sieberana*)



Rice Flower (*Pimelia linifolia*)



River Mangrove (*Aegiceras corniculatum*)



River Rose (*Bauera rubioides*)





Coastal Saltbush (*Rhagodia candolleana*)



Coastal She-Oak (*Allocasuarina distyla*)



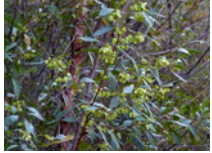
Coastal Tea Tree (*Leptospermum laevigatum*)



Common Correa (*Correa reflexa*)



Common Hop Bush (*Dodonaea triquetra*)



Common Maidenhair (*Adiantum aethiopicum*)



Crab Apple (*Schizomeria ovata*)



Rough Tree Fern (*Cyathea australis*)



Rough-barked Apple (*Angophora floribunda*)



Rough-fruit Pittosporum (*Pittosporum revolutum*)



Rush (*Juncus* spp.)



Rusty Petals (*Lasiopetalum ferrugineum*)



Sandpaper Fig (*Ficus coronata*)



Sandstone Stringybark (*Eucalyptus oblonga*)



Crimson Bottlebrush (*Callistemon citrinus*)



Crinkle Bush (*Lomatia silaifolia*)



Crowea (*Crowea saligna*)



Dagger Hakea (*Hakea teretifolia*)



Darwinia (*Darwinia fascicularis* var. *fascicularis*)



Desmodium (*Desmodium rhytidophyllum*)



Dogwood (*Jacksonia scoparia*)



Scentless Rosewood (*Synoum glandulosum*)



Scribbly Gum (*Eucalyptus haemastoma*)



Sea Rush (*Juncus kraussii*)



Showy Guinea Flower (*Hibbertia linearis*)



Silky Purple Flag (*Patersonia sericea*)



Silver top Ash (*Eucalyptus sieberi*)



Smooth-barked Apple (*Angophora costata*)



Dusky Coral Pea (*Kennedia rubicunda*)



Dwarf Apple (*Angophora hispida*)



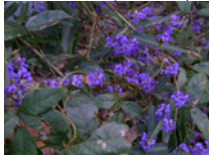
Elderberry Panax (*Polyscias sambucifolia*)



Elliptical Bush-pea (*Pultenaea elliptica*)



False Sarsaparilla (*Hardenbergia violacea*)



Fine-leaf Bush-pea (*Pultenaea stipularis*)



Flannel Flower (*Actinotus helianthi*)



Snake Flower (*Scaevola ramosissima*)



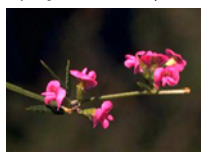
Snake Vine (*Stephania japonica*)



Snow-in-Summer (*Melaleuca linearifolia*)



Spiky Mirbelia (*Mirbelia rubiifolia*)



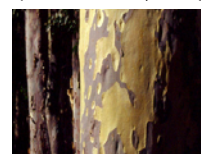
Spinifex Grass (*Spinifex sericeus*)



Spiny-headed Mat-rush (*Lomandra longifolia*)



Spotted Gum (*Eucalyptus maculata*)



Flat-pea (*Platylobium formosum*)



Forest Oak (*Allocasuarina torulosa*)



Fringe Lily (*Thysanotus tuberosus*)



Fringe-myrtle (*Calytrix tetragona*)



Glasswort (*Salicornia quinqueflora*)



Golden Guinea Flower (*Hibbertia scandens*)



Goodenia (*Goodenia ovata*)



Sticky Sword-Sedge (*Leptospermum squarrosum*)



Stiff Bottlebrush (*Callistemon rigidus*)



Swamp Mahogany (*Eucalyptus robusta*)



Swamp Paperbark (*Melaleuca ericifolia*)



Swamp She-Oak (*Casuarina glauca*)



Sweet Scented Wattle (*Acacia suaveolens*)



Sweet Tea (*Smilax glyciphylla*)





Grass Tree (*Xanthorrhoea* spp)



Grey Gum (*Eucalyptus punctata*)



Grey Mangrove (*Avicennia marina*)



Grey Myrtle (*Backhousia myrtifolia*)



Grey Spider Flower (*Grevillea buxifolia*)



Guioa (*Guioa semiglauc*)



Gum Vine (*Aphanopetalum resinosum*)



Sword-sedge (*Gahnia sieberana*)



Sydney Golden Wattle (*Acacia longifolia* var. *sophorae*)



Sydney Peppermint (*Eucalyptus piperita*)



Tall Saw-Sedge (*Gahnia clarkei*)



Trailing Guinea Flower (*Hibbertia empetrifolia*)



Tree Broom-Heath (*Monotoca elliptica*)



Turnipwood (*Rapanea howittiana*)



Hairpin Banksia (*Banksia spinulosa*)



Hakea (*Hakea gibbosa*)



Heath-leaved Banksia (*Banksia ericifolia*)



Healthy Parrot Pea (*Dillwynia retorta*)



Hickory Wattle (*Acacia implexa*)



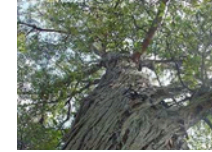
Honey Flower (*Lambertia formosa*)



Knobbly Club Rush (*Ficinia nodosa*)



Turpentine (*Syncarpia glomulifera*)



Twining Guinea Flower (*Hibbertia dentata*)



Umbrella Fern (*Sticherus flabellatus*)



Variable Bossiaea (*Bossiaea heterophylla*)



Water Vine (*Cissus hypoglauca*)



Wedding Bush (*Ricinocarpus pinifolius*)



White Correa (*Correa alba*)





Jasmine Morinda (*Morinda jasminoides*)



Kangaroo Grape (*Cissus antarctica*)



Kangaroo Grass (*Themeda australis*)



Large-leafed Bush-pea (*Pultenaea daphnoides*)



Leafy Purple Flag (*Patersonia glabrata*)



Lemon scented Tea-tree (*Leptospermum polygalifolium*)



Sword-sedge (*Lepidosperma laterale*)



White Spider Flower (*Grevillea linearifolia*)



Wikstroemia (*Wikstroemia indica*)



Wild Quince (*Alectryon subcinereus*)



Wilkiea (*Wilkiea huegeliana*)



Wombat Berry (*Eustrephus latifolius*)



Wonga-Wonga Vine (*Pandorea pandorana*)



Zieria (*Zieria smithii*)



Native Hydrangea (*Abrophyllum ornans*)



Sickly Wattle (*Acacia falcata*)



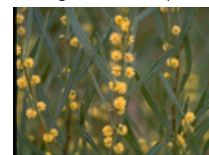
Sally Wattle (*Acacia floribunda*)



Flax-leaved Wattle (*Acacia linifolia*)



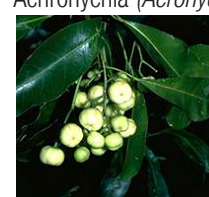
Straight Wattle (*Acacia stricta*)



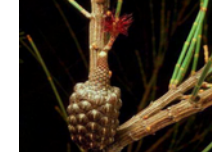
Sunshine Wattle (*Acacia terminalis*)



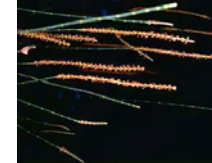
Achronychia (*Achronychia oblongifolia*)



Scrub She-Oak (*Allocasuarina distyla*)



Drooping She-Oak (*Allocasuarina verticillata*)



Yellow Flowered Aotus (*Aotus ericoides*)



Heath Myrtle (*Baeckea imbricata*)



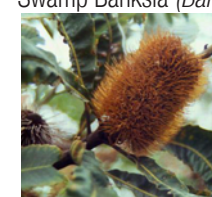
Silver Banksia (*Banksia marginata*)



Fern-leaved Banksia (*Banksia oblongifolia*)



Swamp Banksia (*Banksia robur*)



Baumea (*Baumea juncea*)



Small Leafless Bossiaea (*Bossiaea ensata*)



Willow Bottlebrush (*Callistemon salignus*)



False Bracken Fern (*Calochlaena dubia*)



Native Sedge (*Carex appressa*)



Red Fruited Olive Plum (*Cassine australis*)



Mulga Fern (*Cheilanthes sieberi*)



Orange Thorn (*Citriobatus pauciflorus*)



Brittle Wood (*Claoxylon australe*)



Forest Clematis/ Old Man's Beard (*Clematis glycinoides*)



Barbed-wire Grass (*Cymbopogon refractus*)



Wallaby Grass (*Danthonia species*)



Dianella (*Dianella caerulea*)



Plum Grass (*Dichelachne species*)



Eggs and Bacon (*Dillwynia retorta*)



Hop Bush (*Dodonaea triquetra*)



Corkwood (*Duboisia myoporoides*)



Tufted Echidna Grass (*Echinopogon caespitosus*)



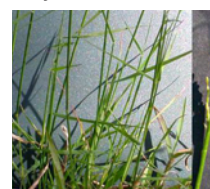
Forest Hedgehog Grass (*Echinopogon ovatus*)



Hard Corkwood (*Endiandra sieberi*)



Wiry Panic/ Entolasia (*Entolasia stricta*)



Pink Wax Flower (*Eriostemon australasius*)



Stringy Bark (*Eucalyptus capitellata*)



Yellow-top Ash (*Eucalyptus luehmannii*)



Grey Ironbark (*Eucalyptus paniculata*)



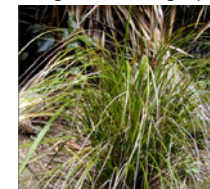
Large-fruited Red Mahogany (*Eucalyptus scias*)



Cherry Ballart (*Exocarpus cupressiformis*)



Rough Saw Sedge (*Gahnia aspera*)





Black-fruit Saw Sedge (*Gahnia melanocarpa*)



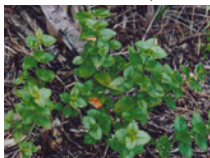
Scrambling Lily (*Geitonoplesium cymosum*)



Native Geranium (*Geranium homeanum*)



Germander Raspwort (*Gonocarpus teucrioides*)



Variable Leaved Goodenia (*Goodenia heterophylla*)



Hop Goodenia (*Goodenia ovata*)



Settlers Flax (*Gymnostachys anceps*)



Broad-leaved Hakea (*Hakea dactyloides*)



Bushy Needlebrush (*Hakea sericea*)



Hydrocotyle (*Hydrocotyle peduncularis*)



Imperata (*Imperata cylindrica*)



Branching Flag Grass (*Libertia paniculata*)



Lobelia (*Lobelia alata*)



Many Flowered Lomandra (*Lomandra multiflora*)



Fish bones (*Lomandra obliqua*)



River Lomatia (*Lomatia myricoides*)



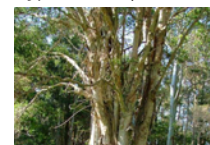
Native Parsley Bush (*Lomatia silaifolia*)



Coastal Beard-heath/ Native Currant (*Leucopogon parviflorus*)



Prickly-leaved Paperbark (*Melaleuca styphelioides*)



Thyme Scented Melaleuca (*Melaleuca thymifolia*)



Weeping Rice Grass/ Weeping Meadow Grass (*Microlaena stipoides*)



Monotoca (*Monotoca elliptica*)



Toothed Paper Daisy/ Native Daisy (*Olearia tomentosa*)



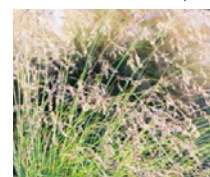
Basket Grass (*Oplismenus species*)



Everlasting Daisy/ Paper Daisy (*Ozothamnus diosmifolium*)



Native Poa Grass (*Poa affinis*)



Broad-leaved Geebung (*Persoonia levis*)



Narrow-leaved Geebung (*Persoonia linearis*)



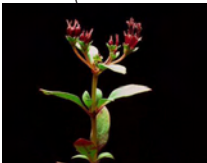
Conesticks (*Petrophile pulchella*)



Slender Rice Flower (*Pimelea linifolia*)



Pomax (*Pomax umbellata*)



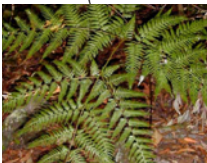
Native Mint Bush (*Prostanthera denticulata*)



Pastel Flower (*Pseuderanthemum variable*)



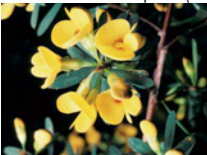
Bracken (*Pteridium esculentum*)



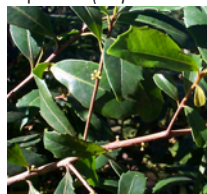
Large-leaved Bush-pea (*Pultenaea daphnoides*)



Graceful Bush-pea (*Pultenaea flexilis*)



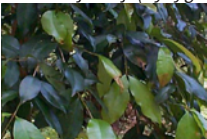
Rapanea (*Rapanea variabilis*)



Broad-leaf Native Raspberry (*Rubus hillii*)



Blue Lilly Pilly (*Syzygium oleosum*)



Magenta Lilly Pilly (*Syzygium paniculatum*)



Waratah (*Telopea speciosissima*)



Water Gum (*Tristaniopsis laurina*)



Tree Heath (*Trochocarpa laurina*)



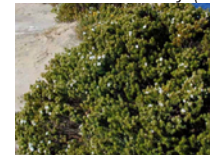
Native Veronica (*Veronica plebeia*)



Native Broom (*Viminaria juncea*)



Coastal Rosemary (*Westringia fruticosa*)



Broadleaf Grass-tree (*Xanthorrhoea arborea*)



Woolly Xanthosia (*Xanthosia pilosa*)



## Acknowledgments

### Photos used with permission from:

Coastal Plants of the Royal National Park CD-Rom  
Australian Plants Society, Sutherland Group  
available at [www.ozemail.com.au/~ssgap/coastal.htm](http://www.ozemail.com.au/~ssgap/coastal.htm)

Plantfile The Ultimate Guide to Plants Online Database  
available at [www.pf-search.com/pwcouncil.php](http://www.pf-search.com/pwcouncil.php)  
See [www.plantfile.com](http://www.plantfile.com) for additional information on the PlantFile CD or Online Database

Botanic Gardens Trust, PlantNET - The Plant Information Network System of Botanic  
Gardens Trust, Sydney, Australia. <http://plantnet.rbgsyd.nsw.gov.au>

Also special thanks to Marita Macrae and Pittwater Council staff who contributed their  
time and photos for this information booklet.